



15th Annual Bull Sale

DECEMBER 13, 2023

Wednesday | 1:00 PM | Clear Creek Ranch, South of Chinook



Shipwheel Cattle Co.

Klint & Lori Swanson
2265 Gooseberry Lane, Chinook, Montana 59523
(406) 357-2492 • (406) 357-2298 fax

Email: shipwheelcattle@itstriangle.com • www.ShipwheelCattle.com

Fellow Cattlemen, Cattlewomen and Friends

A big hello from our outfit to yours. We would like to welcome you to our 15th annual production sale.

As the old saying goes, "Time flies when you are having fun". I guess we must be having lots of fun because it doesn't seem like it's our 15th annual sale already. A huge thank you goes out to everyone that has supported us along the way. Without you this wouldn't be possible. We remain very committed to providing seedstock that are trouble free and profitable for you. They sell fully guaranteed with a three-year guarantee on the bull's feet. These guys have made it through 8 sorts to make it into the top 45%. Our program and management practices enable the bulls to grow and develop slowly with hopes of them working many, many years for you.

We are proud of this year's offering which includes sons of our home raised herd sires as well as top A.I. sires. 29 ET sons from our elite donors are in the offering. We are happy to announce the inaugural "Heart of the Hi Line" female sale on December 16, where we will be offering our females this year. We have joined forces with other progressive minded breeders and have nearly 1,000 head consigned. See ad in the back of catalog.

Thank you again for your interest and continued support. If you are new to our program, we would love to meet and visit. We look forward to seeing you on sale day. If you can't make it and have questions, please give us a call.

Klint, Lori, Austin and Bree Swanson

Check us out at:
www.ShipwheelCattle.com



Bree, Austin, Klint & Lori Swanson



15TH ANNUAL BULL SALE

WEDNESDAY DECEMBER 13, 2023

Lunch at noon • Sale 1:00 P.M.

At the Clear Creek Ranch, South of Chinook, MT

Selling: 100 coming 2 year old bulls

Sale Location:

Shipwheel Cattle Co. South of Chinook: On Hwy 2 in Chinook, turn at the Bear Paw Motel. Head south approx 1 mile to the corner of Route 529 and turn right on to Clear Creek Road. Continue South 11-1/2 miles to Gooseberry Lane and turn right. Go west 2 miles to Shipwheel Cattle Co. barn in the main yard.

Inspection:

Bulls are available anytime at the ranch Chinook, MT.

Sale Order:

- Bulls in catalog order

Auctioneer:



Kyle Shobe,
Lewistown MT

Cell Phone:
(406)366-0472

Special Representatives:

- Bill Pelton Bill Pelton Livestock 406-671-5100
- Kurt Kangas . American Angus Regional Manager 406-366-4190
- John GogginsWestern Ag Reporter 406-698-4159
- Bo BevisNorthern Livestock Video Auction 406-390-3134
- Gary Buffington Northern Livestock Video Auction 406-390-9939
- Devin Murnin.....Western Livestock Journal 406-696-1502
- Curt Cox Wyoming Livestock Roundup 307-630-4604

Sale Day Phone:

- (406) 357-2492 (Office)
- (406)-399-2962 (Klint's cell)
- (406) 945-4180 (Lori's cell)

Trucking:

Free Delivery on bulls up to 1000 miles on purchases totaling \$5,000 or more. Delivery beyond, at cost. \$50 discount per bull if picked up within 1 week.

Volume Discount:

2% on 2 bulls, 5% on 5 up to 10% on 10 bulls.

First Year Breeding Guarantee:

We offer a first breeding season guarantee for any injury that would keep a bull from breeding. If a problem occurs, we will give you a suitable replacement or you will receive full credit, minus the salvage value of the original bull. Insurance is also available. See page 39.

Sight Unseen Buying:

If you are unable to attend the sale, and would like to purchase, please give us a call. We will be glad to help you with your order. We guarantee 100% satisfaction on all orders.

Herd Health:

Our herd health, semen, scrotal evaluation and ultrasound pregnancy testing is performed by Chinook Vet Clinic; Dr. Bob Schmitt, DVM and Dr. Lane Schmitt, DVM. All bulls selling that Shipwheel has used for natural service have tested negative for trichomoniasis. Every bull has tested negative for BVD.

Wintering:

We recommend that the bulls get to their new home within a month of the sale. Wintering arrangements can be made until early March for \$250 per bull if early delivery isn't an option.

Retained Interest:

Shipwheel Cattle Co. is retaining one-third (1/3) revenue sharing semen interest in every bull selling.

Terms & Conditions:

All cattle sell under the standard terms and conditions of the American Angus Association. Announcements sale day will take precedence over info in the catalog. Payment must be made day of sale, unless other prior arrangements are made.

Liability:

All persons who attend the sale do so at their own risk, Shipwheel Cattle Co assumes no liability, legal or otherwise, for any accidents which may occur.



LIVE ON THE INTERNET

See page 37 for details



REFERENCE SIRES

SHIPWHEEL DREAMER 8522



11 Sons Sell

SHIPWHEEL DREAMER 8522

Reg: +*19534719

R R Rito 707 #
 Rito 707 of Ideal 3407 7075
 Ideal 3407 of 1418 076
 S A V Renown 3439 #
 S A V Blackcap May 4136
 S A V 8180 Traveler 004 #
 S A V May 2397 #
 Leachman Right Time 338-5605 #
 WMR Timeless 458 #
 WMR Blackcap 521
 WMR Pride 03
 SRA 2418 of RR 303
 WMR Pride 857
 W M R Pride 045 #

CED	-1
BW	3.8
WW	71
YW	128
MILK	29
SC	.88
MB	.20
RE	.78
FAT	.023
Claw	.48
Angle	.41

Our co-top selling bull in 2019. He's truly the kind we strive to raise and about as complete as we can make one. He's a medium framed, easy fleshing bull with extra muscle shape and nice Angus head. Dreamer is very athletic and moves freely with a long stride and good feet. He injects extra muscle shape and style into his sons while the daughters are broody, soft made and easy fleshing with very nice udders. Dreamers 13 yr. old donor dam is the highest income producing cow we have, which totals \$288,000 in direct progeny sales. Look for many sons in years to come.

Owned with 33 Cattle Company, ND. Leased to Beef 360.

SHIPWHEEL ESSENTIAL 9536



17 Sons Sell

SHIPWHEEL ESSENTIAL 9536

Reg: *19693736

S A V Resource 1441
 Shipwheel Resource 5621
 Apex Eriskay 5506 #
 LT Regions 4110
 Shipwheel Pinetop 720
 Shipwheel Pinetop 572
 Rito 707 of Ideal 3407 7075
 S A V Blackcap May 4136
 Mytty In Focus #
 Apexette Eriskay 3032
 Koupal Advance 28 #
 LT Beauty 8398
 Sitz Far & Wide 6908
 Shipwheel Pinetop 059

CED	7
BW	1.2
WW	65
YW	125
MILK	26
SC	1.32
MB	.44
RE	.51
FAT	.004
Claw	.35
Angle	.47

Essential sold in our 2020 sale to Shane and Vicki Schwenke at Thornhill Ranch, MT. Essential had the herd bull look from day one. He is double bred to our herd bull producing Eriskay cow family, known for excellent udders, moderate size and consistently producing well up into their teens. His dam is a model angus cow that has entered our donor pen. An impressive set of sons sell.

BASIN RAINMAKER 4404



18 Sons Sell

BASIN RAINMAKER 4404

Reg: *17913751

Basin Rainmaker P175 #
 Basin Rainmaker 2704
 Basin Erica 7520 BV #
 Basin Payweight 107S #
 Basin Joy 1036
 Basin Joy 566T
 Basin Rainmaker 747L #
 Basin Blackcap Lady 693L
 Basin Franchise P142 #
 Basin Erica 8R02 BV
 Vermilion Payweight J847 #
 Basin Lucy 3829
 B P F Special Focus 504 #
 Basin Joy 204R

CED	7
BW	1.2
WW	58
YW	107
MILK	35
SC	.69
MB	.58
RE	.45
FAT	.021
Claw	.36
Angle	.35

4404 is an older, proven bull that had impressed us every time we saw him. On the bottom side of his pedigree, he traces back to my very first cow I picked from my parents at Apex Angus. This is the third calf crop from 4404. His daughters are truly his strong point, as the oldest ones here just weaned off a nice set of calves.



REFERENCE SIRES

U2 COALITION 206C



13 Sons Sell

U2 COALITION 206C

Reg: *18626847

Connealy Consensus 7229 #
 HF Syndicate 213Z
 HF Miss Blackcap 27R
 Young Dale Xclusive 25X
 U2 Erelite 109Z
 U-2 Erelite 1X

Connealy Consensus #
 Blue Lilly of Conanga 16
 TC Freedom 104 #
 HF Miss Blackcap 50N
 Young Dale Knock Out 134U
 Young Dale Pollyanna 60T
 S A V Final Answer 0035 #
 U-2 Erelite 8109U

CED	11
BW	.9
WW	56
YW	110
MILK	27
SC	.91
MB	.43
RE	.50
FAT	-.022
Claw	.34
Angle	.41

This is the third calf crop we have had from Coalition. They have been well accepted as a group, as well as having our top seller in 2021 and 2022. His calves are very gentle, long bodied with nice muscle expression. Look for his influence in years to come.

DUFF REAL DEAL 19115



13 Sons Sell

DUFF REAL DEAL 19115

Reg: 19963120

Duff Napoleon 232
 Duff-JC 4Real 16250
 Duff Amigo 927K Juanada 071
 GCC Total Recall 806T
 Duff Queen 0570 3570
 Duff Queen Mother 5146 0570

Duff Distinction 9105
 Duff Eur 443 Merle 808
 Duff Amigo 815
 O C C Juanada 927K
 O C C Missing Link 830M #
 O C C Juanada 741K
 Duff E Blast 8138
 CRCC Queen Mother 5146

CED	9
BW	-.3
WW	46
YW	70
MILK	13
SC	-1.13
MB	.17
RE	.29
FAT	.038
Claw	.41
Angle	.37

Real Deal was the top selling bull at the 2021 Duff Angus sale. He perfectly emulates his name, he is a striking individual with abundant muscle, rib shape and style all his own. His sire, 4 Real, reliably stamps his quality in every mating. Real Deals dam is ultra-feminine, eye appealing, fertile and productive.

W SUNRISE EXECUTIVE LAW 507H



8 Full ET Sons Sell

W SUNRISE EXECUTIVE LAW 507H

Reg: 19940954

Bar-E-L Natural Law 52Y
 PM Executive Decision 5'17
 PM Blossom 124'13
 HF Syndicate 213Z
 HF Tibbie 27D
 HF Tibbie 162B

S A V Bismarck 5682
 Bar-E-L Magnolia 143K
 HF Thunderbird 146Y
 Poplar Meadows Blossom 5'10
 Connealy Consensus 7229 #
 HF Miss Blackcap 27R
 Vision Unanimous 1418 #
 HF Tibbie 103T

CED	4
BW	2.4
WW	74
YW	126
MILK	19
SC	1.73
MB	.16
RE	.89
FAT	-.020
Claw	.39
Angle	.36

507H is a Canadian bred bull that we decided to bring in as a bit of an outcross. He possesses strong maternal along with extra length and performance.

EXPLANATION OF CALVING EASE SCORE DISPOSITION AND FOOT SCORES

We pay very close attention to the foot quality of our herd and only use a bull that we feel will improve hoof structure. We focus on breeding an Angus cow that will stand the test of time in our extreme Northern Montana climate. Foot Quality has been severely over-looked in the chase for bigger numbers. No animal here is trimmed except for our horses. If there ever is a foot problem with a bull purchased from us, we make it right. Any bulls that showed signs of poor hoof structure have been culled.



SHIPWHEEL DREAMER 2636

Reg: 20593553 • Calved: 04/21/22

S A V Renown 3439 #
Shipwheel Dreamer 8522
WMR Pride 03

Rito 707 of Ideal 3407 7075
S A V Blackcap May 4136
WMR Timeless 458 #
WMR Pride 857

Sitz Far & Wide 6908
Triple E Coquette 018B
Triple E Coquette 099T

Sitz Upward 307R #
Sitz Barbaramere Nell 653
G A R US Premium Beef #
Triple E Coquette 932 #



EPDs	
CED	
BW	
WW	
YW	
MILK	
SC	
MB	
RE	
FAT	
Claw	
Angle	

BW	205 WT	WR	YR	Scrotal	
Dam BR	Dam WR	Dam YR	MGD BR	MGD WR	MGD YR

Calving Ease Score: 0 Front Foot Score: 0
Disposition Score: 0 Hind Foot Score: 0

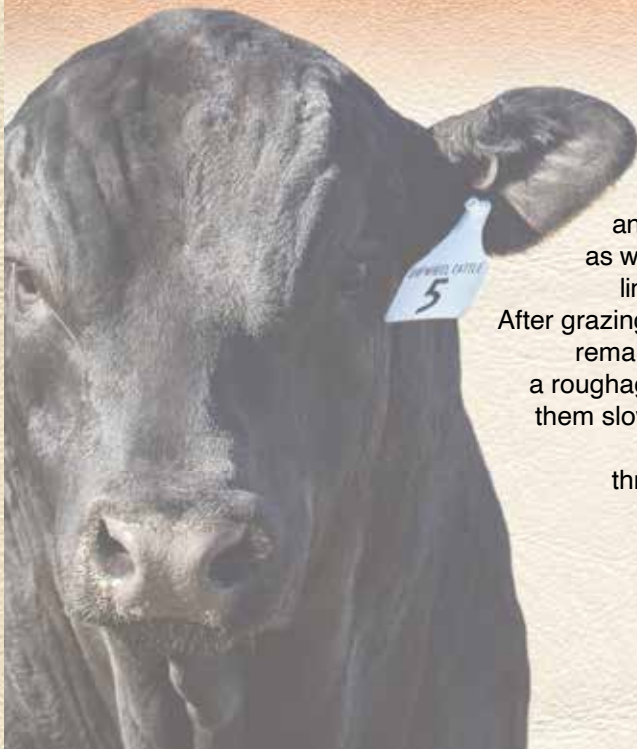
CALVING EASE SCORE:

- 1—Cow Bull
- 2—Large framed heifers or cows
- 3—All heifers or cows

DISPOSITION AND FOOT SCORES:

The scoring for the disposition and foot scores are based on a 1-5 rating. 1 being the very worst and 5 being the very best.

BULL DEVELOPMENT AT SHIPWHEEL CATTLE CO.



Prior to calving, our cows are expected to graze winter pasture with only SweetPro blocks, usually well into February before seeing any hay. Our cows are range calved in April and May while only being checked once a day. The pairs summer primarily in some of our higher, rougher pastures with the calves never seeing any creep feed. A full round of shots are given at our June/July brandings as well as preconditioning in September/October. The calves are then fence line weaned in early November on our hay meadows and SweetPro blocks. After grazing for 30 days, the bulls are then hauled into our grow yard, where they remain until May. While in the grow yard, a 2.5 to 3 lb. gain is targeted with a roughage based diet. We are constantly evaluating them and enjoy watching them slowly progress into structurally sound breeding bulls. The bulls are then hauled to summer pasture where they are expected to travel and thrive in rough terrain. In September, the bulls are brought back into the grow yard and fed a similar diet to post weaning. The bulls are broke to horses, dogs and a hot wire.

A huge thank you goes out to Ron Amidon for the countless hours spent on our rations. His knowledge and experience is very valuable to our program. Also thanks to R&G Feeds, Malta MT.



- Impressive individual with extra length, muscle and style. Arguably maybe the best we've raised phenotypically. A full brother was a top seller in 2022 to John Peebles, MT.
- Dam is a consistent producing cow that has stuck to first cycle A.I., 8 years in a row. She has maintained a flawless level udder with ideal teat size along with great feet and has earned her spot in the donor pen.



SHIPWHEEL DREAMER 2636

Reg: 20593553 • Calved: 04/21/22



S A V Renown 3439 #
Shipwheel Dreamer 8522
WMR Pride 03

Rito 707 of Ideal 3407 7075
S A V Blackcap May 4136
WMR Timeless 458 #
WMR Pride 857

Sitz Far & Wide 6908
Triple E Coquette 018B
Triple E Coquette 099T

Sitz Upward 307R #
Sitz Barbaramere Nell 653
G A R US Premium Beef #
Triple E Coquette 932 #

BW	205 WT	WR	YR	Scrotal	SC	EPDs
87	658	99	107	38	1.17	CED -1
Dam BR	Dam WR	Dam YR	MGD BR	MGD WR	MGD YR	BW 3.0
7/103	7/100	7/102	8/110	8/94	4/104	WW 61
						YW 108
						MILK 28
						RE .86
						FAT .052
						Claw .51
						Angle .41

Calving Ease Score: 1 Front Foot Score: 4
Disposition Score: 4.25 Hind Foot Score: 4.25



SHIPWHEEL REAL DEAL 2610

Reg: 20601773 • Calved: 05/03/22



Duff-JC 4Real 16250
Duff Real Deal 19115
Duff Queen 0570 3570

Duff Napoleon 232
Duff Amigo 927K Juanada 071
SA Ranch Hand 8185 075
Duff Queen Mother 5146 0570

Shipwheel Upward 2517
Shipwheel Pinetop 582 #
Shipwheel Pinetop 0244

Sitz Upward 307R #
Shipwheel Enchantress 8184
Apex High Time 665
D R J Miss Rolls Royce F17 #

BW	205 WT	WR	YR	Scrotal	SC	EPDs
102	793	119	117	36	-.53	CED -3
Dam BR	Dam WR	Dam YR	MGD BR	MGD WR	MGD YR	BW 4.6
6/110	6/110	6/107	10/103	10/98	9/102	WW 75
						YW 122
						MILK 13
						RE -.53
						FAT .025
						Claw .59
						Angle .44

Calving Ease Score: 1 Front Foot Score: 4
Disposition Score: 4.5 Hind Foot Score: 4.25

- Powerful and impressive since this guy hit the ground. We are truly proud of this bull. Performance and maternal in one package.
- Exceptional cow family. Pathfinder donor dam was flushed last year while raising Lot 2 and bred right back.
- Grand dam is currently 13 and still in production.
- Pathfinder Donor 3rd dam raised 12 calves at 106 WR.
- 4th dam raised 11 calves at 102 WR.





- Extra depth in this good, long made
- Rainmaker.
- First calf heifer dam is medium framed and easy fleshing. She bred back first cycle A.I. with a 90 lb. Confederate bull calf.
- Granddam is one of our cherished upward 2517 daughters. She raised a top seller to Ox Bow Ranch, MT in 2022.



SHIPWHEEL RAINMAKER 2554

Reg: 20601723 • Calved: 04/02/22



Basin Rainmaker 2704
Basin Rainmaker 4404
 Basin Joy 1036

Basin Rainmaker P175 #
 Basin Erica 7520 BV #
 Basin Payweight 107S #
 Basin Joy 566T

Pyramid Strategy 4086
Shipwheel Chloe 011
 Shipwheel Chloe 743

S A V Resource 1441 #
 Glacial 20N BlackbirdEve 29R
 Shipwheel Upward 2517
 Shipwheel Chloe 5124

BW	205 WT	WR	YR	Scrotal	SC
71	697	107	109	38	1.13
Dam BR	Dam WR	Dam YR	MGD BR	MGD WR	MGD YR
1/92	1/107	1/109	4/91	4/102	4/102

EPDs	
CED	4
BW	3.6
WW	70
YW	124
MILK	27
SC	1.13
MB	.72
RE	.55
FAT	.025
Claw	.32
Angle	.40

Calving Ease Score: 1 Front Foot Score: 4
 Disposition Score: 4 Hind Foot Score: 4



SHIPWHEEL ESSENTIAL 2621

Reg: 20593565 • Calved: 04/28/22



Shipwheel Resource 5621
Shipwheel Essential 9536
 Shipwheel Pinetop 720 #

S A V Resource 1441 #
 Apex Eriskay 5506 #
 LT Regions 4110
 Shipwheel Pinetop 572

Connealy Packer 547 #
Shipwheel Pinetop 499
 DR J Ms Apex Focus 053 M26

Feltons Meat Packer 62 #
 Bestrelle of Conanga 539
 Apex Focus 053
 D R J Miss Rolls Royce F17 #

BW	205 WT	WR	YR	Scrotal	SC
93	788	119	116	43	1.8
Dam BR	Dam WR	Dam YR	MGD BR	MGD WR	MGD YR
7/110	7/105	6/104	10/103	10/106	9/104

EPDs	
CED	7
BW	1.5
WW	60
YW	112
MILK	31
SC	1.8
MB	.81
RE	.48
FAT	.013
Claw	.45
Angle	.43

Calving Ease Score: 2 Front Foot Score: 4
 Disposition Score: 4 Hind Foot Score: 4

- Impressive performance and predictable maternal bred into this big nutted dandy. Pedigree is loaded up with donor cows.
- Dam is currently 9 yrs. old and earned her right to be flushed this year.
- Granddam raised 10 calves @106 WR.
- Pathfinder donor 3rd dam raised 12 calves at 106 WR.
- 4th dam raised 11 calves at 102 WR.
- ¾ brother to Lot 6.



Shipwheel Pinetop 499 - Dam of Lot 4





- Another dandy Rainmaker equipped with powerful performance and maternal.
- Dam is an attractive, easy fleshing power cow. She raised a top seller to Harvey Thompson, MT in 2022.
- Pathfinder granddam is still in production.



*Shipwheel Coalition 1511 -
Maternal brother to Lot 5*

5 SHIPWHEEL RAINMAKER 2515

Reg: 20601798 • Calved: 04/16/22



Basin Rainmaker 2704
Basin Rainmaker 4404
Basin Joy 1036

Basin Rainmaker P175 #
Basin Erica 7520 BV #
Basin Payweight 107S #
Basin Joy 566T

S A V Raindance 6848 #
Shipwheel Black Pride 939
Shipwheel Black Pride 693 #

Coleman Charlo 0256 #
S A V Blackcap May 4136
Myers Keystone M263
Shipwheel Black Pride 1115

BW	205 WT	WR	YR	Scrotal	SC	EPDs
95	716	110	103	37	.85	CED 2
Dam BR	Dam WR	Dam YR	MGD BR	MGD WR	MGD YR	BW 3.1
2/115	2/107	2/108	5/96	5/104	5/100	WW 73
						YW 124
						MILK 35
						Claw .41
						Angle .35

Calving Ease Score: 1 Front Foot Score: 4.25
Disposition Score: 4.25 Hind Foot Score: 4.25

6 SHIPWHEEL ESSENTIAL 2628

Reg: 20593561 • Calved: 04/21/22



Shipwheel Resource 5621
Shipwheel Essential 9536
Shipwheel Pinetop 720 #

S A V Resource 1441 #
Apex Eriskay 5506 #
LT Regions 4110
Shipwheel Pinetop 572
Feltons Meat Packer 62 #
Bestrelle of Conanga 539
Connealy Forefront #
H C Miss Crissy 501

Connealy Packer 547 #
Shipwheel Crissy 403
Apexette Crissy 4425

BW	205 WT	WR	YR	Scrotal	SC	EPDs
76	659	99	106	39	1.65	CED 11
Dam BR	Dam WR	Dam YR	MGD BR	MGD WR	MGD YR	BW -1.3
7/96	7/98	6/99	10/95	10/98	9/100	WW 50
						YW 104
						MILK 38
						Claw .30
						Angle .45

Calving Ease Score: 3 Front Foot Score: 4
Disposition Score: 4 Hind Foot Score: 4

- A sweet fronted, eye catching, calving ease bull.
- Keep every heifer out of this guy.
- Dam is a pretty, medium framed, perfect uddered Packer daughter. She is a full sister to Packer 4514 that has sons in this sale.
- Donor granddam.



7 SHIPWHEEL RAINMAKER 2537

Reg: 20601725 • Calved: 04/02/22



Basin Rainmaker 2704
Basin Rainmaker 4404
Basin Joy 1036

Basin Rainmaker P175 #
Basin Erica 7520 BV #
Basin Payweight 107S #
Basin Joy 566T
HF Syndicate 213Z
U2 Erelite 109Z
Musgrave Sky High 1535
WMR Pride 03

EPDs	
CED	9
BW	1.3
WW	62
YW	109
MILK	30
SC	.69
MB	.65
RE	.62
FAT	.016
Claw	.40
Angle	.47

BW	205 WT	WR	YR	Scrotal	SC
80	718	110	110	34	
Dam BR	Dam WR	Dam YR	MGD BR	MGD WR	MGD YR
1/102	1/110	1/110	3/95	3/101	3/105

Calving Ease Score: 2 Front Foot Score: 4
Disposition Score: 4.5 Hind Foot Score: 4

- An easy going, deep middled, long bodied bull. Expect exceptional females from this guy.
- First calf heifer dam is super gentle and long bodied. She bred back first cycle A.I. with a 72 lb. Rainmaker 0538 heifer calf.
- Donor 3rd dam is Dreamer's mother, Pride 03.



8 SHIPWHEEL RAINMAKER 2514

Reg: 20593603 • Calved: 04/20/22



Basin Rainmaker 2704
Basin Rainmaker 4404
Basin Joy 1036

Basin Rainmaker P175 #
Basin Erica 7520 BV #
Basin Payweight 107S #
Basin Joy 566T
Coleman Charlo 0256 #
S A V Blackcap May 4136
WMR Timeless 458 #
WMR Pride 857

EPDs	
CED	-1
BW	4.7
WW	79
YW	143
MILK	35
SC	1.12
MB	.34
RE	1.00
FAT	-.011
Claw	.46
Angle	.40

BW	205 WT	WR	YR	Scrotal	SC
102	759	117	122	40	
Dam BR	Dam WR	Dam YR	MGD BR	MGD WR	MGD YR
2/116	2/108	2/112	8/101	8/109	8/107

Calving Ease Score: 1 Front Foot Score: 3.75
Disposition Score: 4 Hind Foot Score: 4

- This guy is as long as a 300-inch Peterbilt with a 700 HP CAT. The longest bull in the sale with plenty of performance.
- Dam is a bigger, power cow with a good disposition.
- Donor granddam, Pride 03.



9 SHIPWHEEL ESSENTIAL 2617

Reg: 20593575 • Calved: 04/23/22



Shipwheel Resource 5621
Shipwheel Essential 9536
Shipwheel Pinetop 720 #

S A V Resource 1441 #
Apex Eriskay 5506 #
LT Regions 4110
Shipwheel Pinetop 572
BPF Freestyle 752
Miss Wix 6140 of BPF #
Connealy Danny Boy #
DR J Miss Apex 053-K115

EPDs	
CED	6
BW	2.7
WW	63
YW	118
MILK	22
SC	1.19
MB	.19
RE	.71
FAT	-.022
Claw	.38
Angle	.52

BW	205 WT	WR	YR	Scrotal	SC
85	674	102	110	40	
Dam BR	Dam WR	Dam YR	MGD BR	MGD WR	MGD YR
6/104	6/100	5/105	13/96	13/98	11/99

Calving Ease Score: 1 Front Foot Score: 4
Disposition Score: 4.25 Hind Foot Score: 4

- This big nutted dandy will sire heavy steers and keeper kind replacements with longevity.
- Dam is a good looking, pretty fronted, nice uddered cow.
- Granddam was the last Dr J cow we had; we lost her last year at 16 yrs. old.

10 SHIPWHEEL PACKER 2501

Reg: 20593588 • Calved: 04/14/22



Connealy Packer 547 #
Shipwheel Packer 4514
Apexette Crissy 4425

Feltons Meat Packer 62 #
Bestrelle of Conanga 539
Connealy Forefront #
H C Miss Crissy 501
S A V Resource 1441 #
Apex Eriskay 5506 #
WMR Timeless 458 #
WMR Pride 857

EPDs	
CED	3
BW	3.1
WW	60
YW	107
MILK	23
SC	.30
MB	.43
RE	.22
FAT	.034
Claw	.46
Angle	.39

BW	205 WT	WR	YR	Scrotal	SC
94	760	117	102	39	
Dam BR	Dam WR	Dam YR	MGD BR	MGD WR	MGD YR
3/106	3/106	3/100	8/101	8/109	8/107

Calving Ease Score: 1 Front Foot Score: 4
Disposition Score: 4.25 Hind Foot Score: 4.25

- Boat loads of maternal bred into this dandy with impressive performance numbers.
- Sire was a top selling selection by Jon Klym in 2015.
- Dam stuck to A.I. her first three calves and earned Pathfinder.
- Donor granddam is Pride 03.



11 SHIPWHEEL ALS DREAMER 2596

Reg: 20669597 • Calved: 04/20/22



S A V Renown 3439 #
Shipwheel Dreamer 8522
 WMR Pride 03

Rito 707 of Ideal 3407 7075
 S A V Blackcap May 4136
 WMR Timeless 458 #
 WMR Pride 857

Apex Uncommon 674
Shipwheel ALS Eriskay 657 #
 Shipwheel Eriskay 330 #

Sitz Uncommon #
 Apexette 043 Bell 9001 #
 S Chisum 6175 #
 Shipwheel Eriskay 034

EPDs	
CED	6
BW	1.7
WW	63
YW	116
MILK	27

BW	205 WT	WR	YR	Scrotal	SC
83	726	109	110	37	.14
Dam BR	Dam WR	Dam YR	MGD BR	MGD WR	MGD YR
5/99	5/103	5/101	7/102	7/104	7/101
					FAT .016

Calving Ease Score: 2 Front Foot Score: 4.25
 Disposition Score: 4 Hind Foot Score: 4.25

- This guy has had our attention from the start. He's a classic Dreamer son that is thick, athletic with great feet and a herd bull attitude. Genomics rank him as a calving ease bull, and he is backed by outstanding cows to boot.
- Pathfinder dam raised our top selling bull in 2020 to Gaugler Angus, MT. She is double bred to Klint's first registered cow from 1984, Apexette Blackcap 4016.
- Donor granddam will have several Dreamer sons in 2024. She raised a top seller to Keith Oetken, NE in 2022.
- Austin's bull.



Shipwheel Eriskay 330 - Granddam of Lot 11

12 SHIPWHEEL ESSENTIAL 2673

Reg: +20601836 • Calved: 04/25/22



Shipwheel Resource 5621
Shipwheel Essential 9536
 Shipwheel Pinetop 720 #

S A V Resource 1441 #
 Apex Eriskay 5506 #
 LT Regions 4110
 Shipwheel Pinetop 572

Sitz Far & Wide 6908
Shipwheel Chloe 4121
 Shipwheel Chloe 970

Sitz Upward 307R #
 Sitz Barbaramere Nell 653
 Sitz Rainmaker 6536
 Apexette Chloe 2050

EPDs	
CED	8
BW	2.0
WW	59
YW	115
MILK	29

BW	205 WT	WR	YR	Scrotal	SC
95	671	100	100	40	1.63
Dam BR	Dam WR	Dam YR	MGD BR	MGD WR	MGD YR
6/104	6/103	6/102	9/106	9/105	9/105
					FAT .024

Calving Ease Score: 1 Front Foot Score: 4
 Disposition Score: 4 Hind Foot Score: 4

- The first of 5 impressive, very uniform, ET sons by 4121. Expect exceptional females out of these guys. Maternal brother was a top seller to C Bar Angus, MT in 2022.
- Donor dam is a medium framed, easy fleshing great footed cow with an excellent disposition and nice udder.
- Donor granddam.
- Full ET brother to Lots 41, 64, 65, 103.



Shipwheel Chloe 4121 - Dam of Lot 12



Shipwheel Chloe 970 - Granddam of Lot 12

13

SHIPWHEEL DREAMER 2593

Reg: 20593585 • Calved: 05/01/22



S A V Renown 3439 #
Shipwheel Dreamer 8522
 WMR Pride 03

Rito 707 of Ideal 3407 7075
 S A V Blackcap May 4136
 WMR Timeless 458 #
 WMR Pride 857

Shipwheel Signature 4541
Shipwheel Enchantress 742 #
 Shipwheel Enchantress 558

Boyd Signature 1014
 Shipwheel Black Pride 277
 Shipwheel Upward 2517
 Shipwheel Enchantress 282

EPDs	
CED	-3
BW	4.7
WW	71
YW	116
MILK	16
SC	.52
MB	.25
RE	.50
FAT	.033
Claw	.48
Angle	.41

BW	205 WT	WR	YR	Scrotal	
97	652	98	100	37	
Dam BR	Dam WR	Dam YR	MGD BR	MGD WR	MGD YR
4/103	4/105	3/106	1/88	1/100	1/100

Calving Ease Score: 1 Front Foot Score: 4

Disposition Score: 4.25 Hind Foot Score: 4.5

- Another eye-catching Dreamer son with a nice profile and muscle shape.
- Pathfinder Dam is a super gentle, feminine cow with a nice udder.



14

SHIPWHEEL RAINMAKER 2532

Reg: 20601803 • Calved: 04/09/22



Basin Rainmaker 2704
Basin Rainmaker 4404
 Basin Joy 1036

Basin Rainmaker P175 #
 Basin Erica 7520 BV #
 Basin Payweight 107S #
 Basin Joy 566T

Pyramid Strategy 4086
Shipwheel Eriskay 9137
 Shipwheel Eriskay 0136

S A V Resource 1441 #
 Glacial 20N BlackbirdEve 29R
 SydGen C C & 7 #
 Apexette Eriskay 1000

EPDs	
CED	-1
BW	4.2
WW	66
YW	114
MILK	21
SC	.79
MB	.53
RE	.78
FAT	-.026
Claw	.39
Angle	.33

BW	205 WT	WR	YR	Scrotal	
101	691	106	107	37	
Dam BR	Dam WR	Dam YR	MGD BR	MGD WR	MGD YR
2/112	2/102	2/103	6/108	6/100	5/102

Calving Ease Score: 1 Front Foot Score: 4

Disposition Score: 4 Hind Foot Score: 4

- Good bull here with extra rib and performance.
- Dam is a medium framed, wedge-shaped young cow with a nice udder.



15

SHIPWHEEL DREAMER 2521

Reg: 20593612 • Calved: 04/12/22



S A V Renown 3439 #
Shipwheel Dreamer 8522
 WMR Pride 03

Rito 707 of Ideal 3407 7075
 S A V Blackcap May 4136
 WMR Timeless 458 #
 WMR Pride 857

Bruin Torque 5261
Shipwheel Eriskay 973
 Shipwheel Eriskay 477

S A V 004 Density 4336 #
 Falcon Blackbird 6071
 BPF 752 Freestyle 0111
 Apex Eriskay 624

EPDs	
CED	5
BW	2.4
WW	64
YW	115
MILK	38
SC	.75
MB	.32
RE	.84
FAT	.002
Claw	.50
Angle	.49

BW	205 WT	WR	YR	Scrotal	
89	672	103	106	36.5	
Dam BR	Dam WR	Dam YR	MGD BR	MGD WR	MGD YR
2/107	2/106	2/103	7/110	7/99	4/103

Calving Ease Score: 1 Front Foot Score: 4

Disposition Score: 4.5 Hind Foot Score: 4

- A deep ribbed, soft made, easy going standout of a bull. He just gets better and better.
- Dam is a moderate framed, gentle, excellent uddered young cow off to a good start.



16 SHIPWHEEL RAINMAKER 2504

Reg: 20601793 • Calved: 04/18/22

Basin Rainmaker 2704
Basin Rainmaker 4404
Basin Joy 1036

Basin Rainmaker P175 #
Basin Erica 7520 BV #
Basin Payweight 107S #
Basin Joy 566T
Rito 707 of Ideal 3407 7075
S A V Blackcap May 4136
Sitz Far & Wide 6908
Apexette Chloe 4099 #



EPDs	
CED	0
BW	4.5
WW	65
YW	118
MILK	32
SC	1.72
MB	.61
RE	.42
FAT	.020
Claw	.28
Angle	.38

S A V Resource 1441 #
Shipwheel Chloe 845
Shipwheel Chloe 263 #

BW	205 WT	WR	YR	Scrotal	SC
103	710	109	105	37	.61
Dam BR	Dam WR	Dam YR	MGD BR	MGD WR	MGD YR
3/100	3/103	3/102	6/102	6/103	6/102

Calving Ease Score: 1 Front Foot Score: 5
Disposition Score: 4.5 Hind Foot Score: 5

- A rugged made bull whose sons will push the scale down and heifers will be the keeper kind.
- Young dam is easy fleshing and excellent uddered. She stuck to A.I. her first three calves and just missed Pathfinder.



18 SHIPWHEEL DREAMER 2524

Reg: 20593616 • Calved: 04/10/22

S A V Renown 3439 #
Shipwheel Dreamer 8522
WMR Pride 03

Rito 707 of Ideal 3407 7075
S A V Blackcap May 4136
WMR Timeless 458 #
WMR Pride 857
S A V 004 Density 4336 #
Falcon Blackbird 6071
S Chisum 255 #
Shipwheel Verona 221 #



EPDs	
CED	9
BW	-.5
WW	47
YW	87
MILK	34
SC	-.04
MB	.23
RE	.79
FAT	.039
Claw	.38
Angle	.45

Bruin Torque 5261
Shipwheel Verona 985
Shipwheel Verona 444 #

BW	205 WT	WR	YR	Scrotal	SC
81	696	107	103	33	.23
Dam BR	Dam WR	Dam YR	MGD BR	MGD WR	MGD YR
2/96	2/106	2/103	7/87	7/109	6/105

Calving Ease Score: 2 Front Foot Score: 4
Disposition Score: 4 Hind Foot Score: 4

- A medium framed Dreamer that should make excellent females.
- "A" ratings for udder, teats, disposition and mothering ability on this good young cow on her way to Pathfinder. She has stuck to A.I. her first 3 yrs. in a row and has another Dreamer bull for 2024.
- Pathfinder Granddam.
- Pathfinder 3rd dam.



17 SHIPWHEEL DREAMER 2643

Reg: 20593558 • Calved: 04/24/22

S A V Renown 3439 #
Shipwheel Dreamer 8522
WMR Pride 03

Rito 707 of Ideal 3407 7075
S A V Blackcap May 4136
WMR Timeless 458 #
WMR Pride 857
Sitz Upward 307R #
Sitz Barbaramere Nell 653
Mytty In Focus #
Apexette Chloe 4099 #



EPDs	
CED	2
BW	3.5
WW	57
YW	102
MILK	25
SC	.86
MB	.51
RE	.73
FAT	-.004
Claw	.40
Angle	.39

Sitz Far & Wide 6908
Shipwheel Chloe 339
Apex Chloe 648

BW	205 WT	WR	YR	Scrotal	SC
90	678	102	100	36	.51
Dam BR	Dam WR	Dam YR	MGD BR	MGD WR	MGD YR
8/100	8/98	7/98	5/97	5/93	3/98

Calving Ease Score: 1 Front Foot Score: 4
Disposition Score: 4.5 Hind Foot Score: 4

- A gentle Dreamer son with good muscle and shape.
- Dam is an easy fleshing, consistent producer with a good udder and disposition.

19 SHIPWHEEL CONCHO 2522

Reg: 20593613 • Calved: 04/10/22

Vermilion Spur E870
JVC Concho 28
JVC Henrietta Pride 333

Connealy Spur #
Vermilion Lass 4942
C C A Uno 049 #
JVC Henrietta Pride Y137
Baldrige Blacktop B228
LT Miss Wix 2242
Connealy Capitalist 028 #
Apexette Crissy 4425



EPDs	
CED	3
BW	2.6
WW	69
YW	121
MILK	23
SC	.66
MB	.56
RE	.41
FAT	.008
Claw	.41
Angle	.41

LT Monument 7201
Shipwheel Crissy 979
Shipwheel Crissy 408

BW	205 WT	WR	YR	Scrotal	SC
81	693	106	107	37	.56
Dam BR	Dam WR	Dam YR	MGD BR	MGD WR	MGD YR
2/94	2/99	1/107	5/96	5/103	5/103

Calving Ease Score: 1 Front Foot Score: 4
Disposition Score: 4 Hind Foot Score: 4

- The first of a nice group of Concho sons. He's long spined and gentle.
- Nice young cow has stuck to A.I. her first 3 calves with twins by Dreamer on her third.

LOTS 20 AND 21 - FULL BROTHERS



20

SHIPWHEEL AB COALITION 2682

Reg: +20601813 • Calved: 05/01/22



HF Syndicate 213Z
U-2 Coalition 206C #
U2 Erelite 109Z

Connealy Consensus 7229 #
HF Miss Blackcap 27R
Young Dale Xclusive 25X
U-2 Erelite 1X

Connealy Thunder #
Apexette Rachel 2011
Apexette Rachel 0048

Baldrige Kaboom K243 KCF #
Parka of Conanga 241 #
Apex Focus 053
Apexette Rachel 5089 #

EPDs	
CED	6
BW	1.9
WW	63
YW	116
MILK	30
SC	1.05
MB	.31
RE	.58
FAT	.007
Claw	.33
Angle	.38

BW	205 WT	WR	YR	Scrotal	
103	670	100	100	37	
Dam BR	Dam WR	Dam YR	MGD BR	MGD WR	MGD YR
8/93	8/99	7/103	7/95	7/98	4/101

Calving Ease Score: 1 Front Foot Score: 4
Disposition Score: 4.25 Hind Foot Score: 4.25

- 2 royally bred full ET brothers by the great 2011 cow. Coalition x Thunder will leave exceptional females and sons with extra shape and muscle.
- Donor dam is as pretty and great footed as a cow can be. She has raised top sellers in the past including a \$25,000 selection to Hilltop Angus, MT. More importantly are the daughters she is leaving in our herd.
- Austin and Bree's bulls

21

SHIPWHEEL AB COALITION 2681

Reg: +20601847 • Calved: 04/24/22



HF Syndicate 213Z
U-2 Coalition 206C #
U2 Erelite 109Z

Connealy Consensus 7229 #
HF Miss Blackcap 27R
Young Dale Xclusive 25X
U-2 Erelite 1X

Connealy Thunder #
Apexette Rachel 2011
Apexette Rachel 0048

Baldrige Kaboom K243 KCF #
Parka of Conanga 241 #
Apex Focus 053
Apexette Rachel 5089 #

EPDs	
CED	10
BW	1.5
WW	56
YW	107
MILK	23
SC	1.26
MB	.63
RE	.34
FAT	.043
Claw	.24
Angle	.30

BW	205 WT	WR	YR	Scrotal	
89	641	100	100	35	
Dam BR	Dam WR	Dam YR	MGD BR	MGD WR	MGD YR
8/93	8/99	7/103	7/95	7/98	4/101

Calving Ease Score: 2 Front Foot Score: 4
Disposition Score: 4.5 Hind Foot Score: 4



Apexette Rachel 2011 - Dam of Lots 20 & 21



Shipwheel BLS Rachel 725 - Maternal sister to Lots 20 & 21



22 SHIPWHEEL REAL DEAL 2546

Reg: 20601743 • Calved: 03/28/22



Duff-JC 4Real 16250
Duff Real Deal 19115
Duff Queen 0570 3570

Duff Napoleon 232
Duff Amigo 927K Juanada 071
SA Ranch Hand 8185 075
Duff Queen Mother 5146 0570

BPF DR J 2110
Shipwheel Chloe 080
Shipwheel Chloe 425

Shipwheel Dr J In Focus 9560
BPF Forever Lady 651
Shipwheel ForeFront 0567
Shipwheel Chloe 1170

						EPDs	
BW	205 WT	WR	YR	Scrotal	SC	CED	10
79	704	108	106	35	MB	BW	1.4
Dam BR	Dam WR	Dam YR	MGD BR	MGD WR	MGD YR	WW	63
1/101	1/108	1/106	4/101	4/101	4/106	YW	100
						MILK	14
						FAT	.038
						Claw	.52
						Angle	.48

Calving Ease Score: 2 Front Foot Score: 4
Disposition Score: 4.5 Hind Foot Score: 4

- A good top and quarter on this gentle bull. He's been a standout since birth.
- First calf heifer dam is long spined and gentle with a very nice Dr. J udder.

24 SHIPWHEEL RAINMAKER 2613

Reg: 20601769 • Calved: 04/28/22



Basin Rainmaker 2704
Basin Rainmaker 4404
Basin Joy 1036

Basin Rainmaker P175 #
Basin Erica 7520 BV #
Basin Payweight 107S #
Basin Joy 566T

S A V Resource 1441 #
Shipwheel Pinetop 515
Dr J Ms Wide Track 374 M15

Rito 707 of Ideal 3407 7075
S A V Blackcap May 4136
Apex Wide Track 374
DR J Miss Guru I6

						EPDs	
BW	205 WT	WR	YR	Scrotal	SC	CED	5
86	705	106	104	37	MB	BW	2.2
Dam BR	Dam WR	Dam YR	MGD BR	MGD WR	MGD YR	WW	63
6/110	6/105	6/103	7/94	7/103	6/103	YW	117
						MILK	29
						FAT	.018
						Claw	.37
						Angle	.47

Calving Ease Score: 1 Front Foot Score: 4.25
Disposition Score: 4 Hind Foot Score: 4.25

- A no holes, well rounded bull that covers all the bases. Incredible maternal with performance.
- Dam is one of the very best on the ranch. She's moderate framed, long bodied, easy fleshing with a nice udder and is headed to the donor pen. A daughter raised a top seller going to Apex Angus, Shipwheel Rainmaker 0538, that we are using back in the herd.
- Donor granddam is the mother to Shipwheel Montana. Donor 3rd dam.
- 4th dam raised 12 calves @ 107 WR. 5th dam raised 11 calves @ 102 WR.

23 SHIPWHEEL CONCHO 2517

Reg: 20593609 • Calved: 04/12/22



Vermilion Spur E870
JVC Concho 28
JVC Henrietta Pride 333

Connealy Spur #
Vermilion Lass 4942
C C A Uno 049 #
JVC Henrietta Pride Y137

LD Capitalist 316 #
Shipwheel Elba 959
Shipwheel Elba 790

Connealy Capitalist 028 #
LD Dixie Erica 2053
S A V Resource 1441 #
Shipwheel Elba 088

						EPDs	
BW	205 WT	WR	YR	Scrotal	SC	CED	3
83	670	103	104	37	MB	BW	4.6
Dam BR	Dam WR	Dam YR	MGD BR	MGD WR	MGD YR	WW	83
2/97	2/104	2/103	2/116	2/103	1/101	YW	142
						MILK	15
						FAT	.002
						Claw	.37
						Angle	.38

Calving Ease Score: 1 Front Foot Score: 4.5
Disposition Score: 4.5 Hind Foot Score: 4.5

- A long spined, Concho with extra muscle. He will sire exceptional feeder cattle.
- Dam is one of the prettiest cows we have. She's easy fleshing and excellent uddered with small teats. A son sold to Russell Tempero, MT in 2022.

25 SHIPWHEEL ESSENTIAL 2623

Reg: 20593563 • Calved: 04/26/22



Shipwheel Resource 5621
Shipwheel Essential 9536
Shipwheel Pinetop 720 #

S A V Resource 1441 #
Apex Eriskay 5506 #
LT Regions 4110
Shipwheel Pinetop 572

Connealy Earnan 076E #
Shipwheel Black Pride 424
Shipwheel Black Pride 1128

Connealy Consensus #
Brazila of Conanga 3991 839A
Sitz Far & Wide 6908
DR J Miss ND 878-J61 #

						EPDs	
BW	205 WT	WR	YR	Scrotal	SC	CED	5
74	678	102	102	37	MB	BW	1.3
Dam BR	Dam WR	Dam YR	MGD BR	MGD WR	MGD YR	WW	58
7/99	7/103	6/103	6/101	6/96	4/97	YW	112
						MILK	27
						FAT	-.003
						Claw	.42
						Angle	.39

Calving Ease Score: 1 Front Foot Score: 4
Disposition Score: 4 Hind Foot Score: 4

A complete, long-bodied Essential. He will sire a little extra frame and performance.

- Dam is a bigger, easy fleshing cow with a nice udder.

26 SHIPWHEEL RAINMAKER 2645

Reg: 20601779 • Calved: 05/01/22



Basin Rainmaker 2704
Basin Rainmaker 4404
Basin Joy 1036

Basin Rainmaker P175 #
Basin Erica 7520 BV #
Basin Payweight 107S #
Basin Joy 566T
S A V Resource 1441 #
S A V Blackcap May 5530 #
Sitz Upward 307R #
D R J Miss Rolls Royce F17 #

EPDs	
CED	0
BW	3.8
WW	70
YW	135
MILK	35
SC	2.04
MB	.09
RE	.73
FAT	-.053
Claw	.47
Angle	.41

S A V Regard 4863 #
Shipwheel Pinetop 662
Shipwheel Pinetop 248 #

BW	205 WT	WR	YR	Scrotal	SC
92	658	99	105	39	
Dam BR	Dam WR	Dam YR	MGD BR	MGD WR	MGD YR
5/111	5/97	3/105	5/98	5/99	3/104

Calving Ease Score: 1 Front Foot Score: 4.5
Disposition Score: 4 Hind Foot Score: 4.5

- A rugged made bull that will sire extra performance and keeper kind replacements.
- Dam is an ideal Angus cow. Pretty fronted, easy fleshing with a perfect udder and exceptional feet.
- Pathfinder granddam.
- Donor Pathfinder 3rd dam raised 12 calves @ 106 WR.
- 4th dam raised 11 calves @ 102 WR.

27 SHIPWHEEL DR J 2576

Reg: 20644643 • Calved: 05/13/22



Shipwheel Dr J In Focus 9560
BPF DR J 2110
BPF Forever Lady 651

Dr J Apex Focus 053-M89
Apexette Crissy 4425
B/R New Frontier 095 #
Gdar SVF Forever Lady 226D
Rito 707 of Ideal 3407 7075
S A V Blackcap May 4136
Apex Long Distance 102
Shipwheel Pinetop 878

EPDs	
CED	-2
BW	5.7
WW	79
YW	130
MILK	21
SC	.82
MB	.63
RE	.73
FAT	.004
Claw	.43
Angle	.40

S A V Resource 1441 #
Shipwheel Pinetop 897
Shipwheel Pinetop 4119

BW	205 WT	WR	YR	Scrotal	SC
105	749	113	110	35	
Dam BR	Dam WR	Dam YR	MGD BR	MGD WR	MGD YR
3/109	3/105	3/103	4/109	4/102	4/99

Calving Ease Score: 1 Front Foot Score: 4.5
Disposition Score: 4 Hind Foot Score: 4.5

- A rugged made, stout boned Dr J that will definitely add pay weight to his calves.
- Dam is a moderate, thick made young cow off to a great start.

28 SHIPWHEEL PACKER 2530

Reg: 20593623 • Calved: 04/15/22



Connealy Packer 547 #
Shipwheel Packer 4514
Apexette Crissy 4425

Feltons Meat Packer 62 #
Bestrelle of Conanga 539
Connealy Forefront #
H C Miss Crissy 501
S A V Resource 1441 #
Apex Eriskay 5506 #
S A V Resource 1441 #
Dr J Ms Wide Track 374 M15

EPDs	
CED	5
BW	2.7
WW	56
YW	102
MILK	17
SC	1.64
MB	-.15
RE	.27
FAT	-.002
Claw	.56
Angle	.55

Shipwheel Resource 5621
Shipwheel Pinetop 9115
Shipwheel Pinetop 513

BW	205 WT	WR	YR	Scrotal	SC
94	695	107	109		
Dam BR	Dam WR	Dam YR	MGD BR	MGD WR	MGD YR
2/115	2/108	2/106	5/104	5/99	3/96

Calving Ease Score: 1 Front Foot Score: 4
Disposition Score: 4 Hind Foot Score: 4

- A densely made bull with plenty of depth and body. He was one of the heaviest off the grass.
- Dam is a pretty, medium framed cow that has stuck to first cycle A.I. three years in a row. She's well on her way to Pathfinder. Great cow family.



BPF DR J 2110 - Sire of Lot 27



29 SHIPWHEEL EXECUTIVE LAW 2647

Reg: +20601839 • Calved: 04/19/22



PM Executive Decision 5'17
W Sunrise Executive Law 507H
 HF Tibbie 27D

Bar-E-L Natural Law 52Y
 PM Blossom 124'13
 HF Syndicate 213Z
 HF Tibbie 162B

Connealy Packer 547 #
Shipwheel Gloria 322 #
 S Gloria 209 #

Feltons Meat Packer 62 #
 Bestrelle of Conanga 539
 Leachman Right Time #
 S Gloria 0118

EPDs	
CED	2
BW	2.7
WW	68
YW	121
MILK	31

BW	205 WT	WR	YR	Scrotal	SC
88	640	104	108	38	1.59
Dam BR	Dam WR	Dam YR	MGD BR	MGD WR	MGD YR
6/110	6/107	6/104	9/99	9/103	8/101
					FAT .010
					Claw .38
					Angle .44

Calving Ease Score: 1 Front Foot Score: 4
 Disposition Score: 4 Hind Foot Score: 4

- The first of 8 full ET brothers that are rugged built bulls with good length, performance and an outcross pedigree. Maternal brother was a top seller to Jon Clark, WY in 2022.
- Pathfinder Donor dam is currently 10 yrs. old and still going strong. She's a super gentle, excellent uddered cow with great feet.
- Full ET brother to lots 39, 55, 81, 83, 84, 85, 106.

30 SHIPWHEEL DREAMER 2523

Reg: 20593615 • Calved: 04/11/22



S A V Renown 3439 #
Shipwheel Dreamer 8522
 WMR Pride 03

Rito 707 of Ideal 3407 7075
 S A V Blackcap May 4136
 WMR Timeless 458 #
 WMR Pride 857

Bruin Torque 5261
Shipwheel Georgina 983
 Shipwheel Georgina 422

S A V 004 Density 4336 #
 Falcon Blackbird 6071
 S Chisum 255 #
 Shipwheel Georgina 1118

EPDs	
CED	2
BW	3.1
WW	68
YW	124
MILK	25

BW	205 WT	WR	YR	Scrotal	SC
96	685	105	101	35	.67
Dam BR	Dam WR	Dam YR	MGD BR	MGD WR	MGD YR
2/108	2/104	2/92	4/98	4/93	4/96
					FAT .041
					Claw .48
					Angle .46

Calving Ease Score: 1 Front Foot Score: 4
 Disposition Score: 4 Hind Foot Score: 4.25

- Another good-looking Dreamer bull with a medium frame. Genomics indicate excellent weaning and yearling growth.
- Young dam is moderate framed, excellent uddered and well on her way to Pathfinder with another Dreamer bull calf in 2023.

31 SHIPWHEEL REAL DEAL 2689

Reg: 20644654 • Calved: 04/30/22



Duff-JC 4Real 16250
Duff Real Deal 19115
 Duff Queen 0570 3570

Duff Napoleon 232
 Duff Amigo 927K Juanada 071
 SA Ranch Hand 8185 075
 Duff Queen Mother 5146 0570

WMR Timeless 458 #
WMR Pride 03
 WMR Pride 857

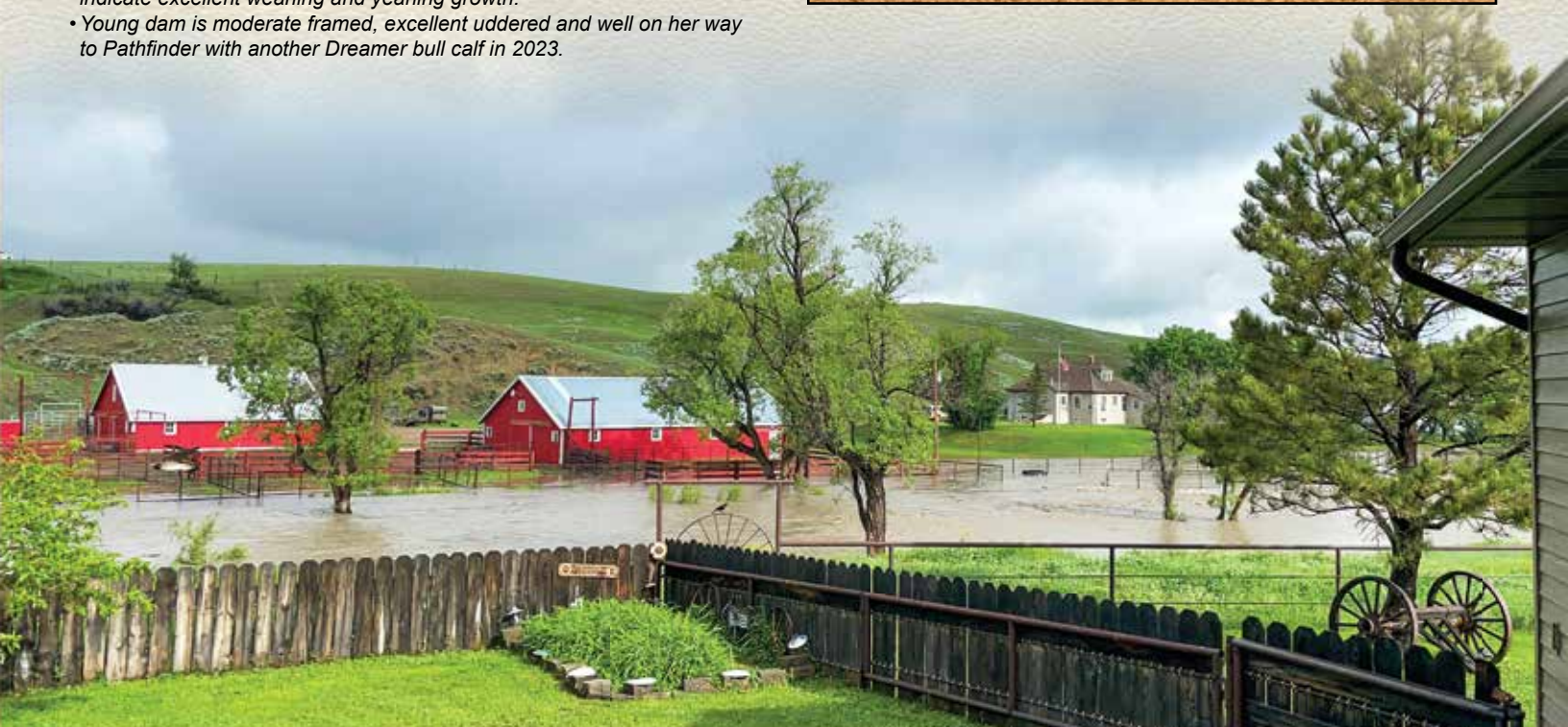
Leachman Right Time 338-5605 #
 WMR Blackcap 521
 SRA 2418 of RR 303
 W M R Pride 045 #

EPDs	
CED	12
BW	.1
WW	55
YW	88
MILK	17

BW	205 WT	WR	YR	Scrotal	SC
85	694	110	100	36	.04
Dam BR	Dam WR	Dam YR	MGD BR	MGD WR	MGD YR
8/101	8/109	8/107	8/92	8/101	3/101
					FAT .56
					FAT .042
					Claw .46
					Angle .41

Calving Ease Score: 3 Front Foot Score: 4
 Disposition Score: 4.5 Hind Foot Score: 4

- A direct son of the great Pride 03 cow and maternal brother to Dreamer. This guy was a twin and had the herd bull look from day one. Interesting pedigree and +11 \$EN.
- Dam needs no introduction as her direct progeny have earned nearly \$300,000 at nearly 14 yrs. old.



LOTS 32, 33 & 34 - FULL ET BROTHERS

- 3 full ET brothers with old school muscle and maternal bred in. Look to these guys if you are serious about making great females without sacrificing performance.
- Donor dam is a super gentle, moderate framed, thick made cow with a nice udder and excellent feet.
- Donor Granddam.

32

SHIPWHEEL PACESETTER 2683

Reg: +20608151 • Calved: 04/28/22



Figure 8 Pacesetter 431P
FairView Pacesetter 5022
FairView Lady Traveler 3287

Lookout Pacesetter 147L
Figure 8 Angus Stumpie 112K
Rito 707 of Ideal 3407 7075
FairView Lady Traveler X85

Sitz Far & Wide 6908
Shipwheel Chloe 4121
Shipwheel Chloe 970

Sitz Upward 307R #
Sitz Barbaramere Nell 653
Sitz Rainmaker 6536
Apexette Chloe 2050

EPDs	
CED	6
BW	.3
WW	49
YW	82
MILK	27
SC	1.51
MB	.29
RE	.21
FAT	.018
Claw	.31
Angle	.42

BW	205 WT	WR	YR	Scrotal	
92	668	100	100	36	
Dam BR	Dam WR	Dam YR	MGD BR	MGD WR	MGD YR
6/104	6/103	6/102	9/106	9/105	9/105

Calving Ease Score: 1 Front Foot Score: 4.5
Disposition Score: 4 Hind Foot Score: 4.5



33

SHIPWHEEL PACESETTER 2685

Reg: +20608136 • Calved: 04/26/22



Figure 8 Pacesetter 431P
FairView Pacesetter 5022
FairView Lady Traveler 3287

Lookout Pacesetter 147L
Figure 8 Angus Stumpie 112K
Rito 707 of Ideal 3407 7075
FairView Lady Traveler X85

Sitz Far & Wide 6908
Shipwheel Chloe 4121
Shipwheel Chloe 970

Sitz Upward 307R #
Sitz Barbaramere Nell 653
Sitz Rainmaker 6536
Apexette Chloe 2050

EPDs	
CED	1
BW	1.3
WW	53
YW	90
MILK	29
SC	.32
MB	-.05
RE	.56
FAT	.001
Claw	.28
Angle	.38

BW	205 WT	WR	YR	Scrotal	
80	636	100	100	36	
Dam BR	Dam WR	Dam YR	MGD BR	MGD WR	MGD YR
6/104	6/103	6/102	9/106	9/105	9/105

Calving Ease Score: 1 Front Foot Score: 4
Disposition Score: 4.25 Hind Foot Score: 4



34

SHIPWHEEL PACESETTER 2684

Reg: +20608138 • Calved: 04/26/22



Figure 8 Pacesetter 431P
FairView Pacesetter 5022
FairView Lady Traveler 3287

Lookout Pacesetter 147L
Figure 8 Angus Stumpie 112K
Rito 707 of Ideal 3407 7075
FairView Lady Traveler X85

Sitz Far & Wide 6908
Shipwheel Chloe 4121
Shipwheel Chloe 970

Sitz Upward 307R #
Sitz Barbaramere Nell 653
Sitz Rainmaker 6536
Apexette Chloe 2050

EPDs	
CED	2
BW	3.8
WW	71
YW	121
MILK	29
SC	2.06
MB	.04
RE	.64
FAT	-.013
Claw	.39
Angle	.44

BW	205 WT	WR	YR	Scrotal	
103	651	100	100	37	
Dam BR	Dam WR	Dam YR	MGD BR	MGD WR	MGD YR
6/104	6/103	6/102	9/106	9/105	9/105

Calving Ease Score: 1 Front Foot Score: 4.25
Disposition Score: 4 Hind Foot Score: 4.25

*FairView Pacesetter 5022 -
Sire of Lots 32-34*



*Shipwheel Chloe 4121 -
Dam of Lots 32-34*



35 SHIPWHEEL ESSENTIAL 2615
 Reg: 20593569 • Calved: 04/21/22

Shipwheel Resource 5621
Shipwheel Essential 9536
 Shipwheel Pinetop 720 #

Connealy Packer 547 #
Shipwheel Crissy 507
 Apexette Crissy 4425

S A V Resource 1441 #
 Apex Eriskay 5506 #
 LT Regions 4110
 Shipwheel Pinetop 572

Feltons Meat Packer 62 #
 Bestrelle of Conanga 539
 Connealy Forefront #
 H C Miss Crissy 501



EPDs					
CED	9				
BW	1.0				
WW	58				
YW	106				
MILK	25				
SC	.79				
MB	.12				
RE	.27				
FAT	.022				
Claw	.48				
Angle	.54				

BW	205 WT	WR	YR	Scrotal	SC
85	670	101	99	36	
Dam BR	Dam WR	Dam YR	MGD BR	MGD WR	MGD YR
6/94	6/96	4/94	10/95	10/98	9/100

Calving Ease Score: 3 Front Foot Score: 4
 Disposition Score: 4 Hind Foot Score: 4

- Boat loads of maternal power bred into this good-looking Essential son.
- Dam is an ideal angus cow. Pretty fronted, perfect uddered, moderate framed and easy fleshing.
- Donor granddam.

37 SHIPWHEEL TITANIUM 2529
 Reg: 20644637 • Calved: 05/01/22

Mc Cumber Titanium 5005
MVCC 5005-925
 MVCC Molly 424

Bruin Torque 5261
Shipwheel Black Pride 9112
 Shipwheel Black Pride 4128

Mc Cumber Titanium 3127
 Miss Wix 7126 of Mc Cumber #
 Vermilion 7078 Dateline L189
 Sackmann Molly 076

S A V 004 Density 4336 #
 Falcon Blackbird 6071
 BPF 752 Freestyle 0111
 DR J Miss Lead On-K109 #



EPDs					
CED	-1				
BW	3.1				
WW	55				
YW	104				
MILK	37				
SC	.57				
MB	-.15				
RE	.60				
FAT	-.019				
Claw	.47				
Angle	.47				

BW	205 WT	WR	YR	Scrotal	SC
93	694	107	110	35	
Dam BR	Dam WR	Dam YR	MGD BR	MGD WR	MGD YR
2/113	2/103	1/110	4/104	4/103	4/103

Calving Ease Score: 1 Front Foot Score: 4
 Disposition Score: 4 Hind Foot Score: 4

- This guy catches your eye in the pen. 50K rankings are high for weaning, yearling and milk.
- Dam is moderate, easy fleshing with a perfect udder and small teats.

36 SHIPWHEEL REAL DEAL 2629
 Reg: 20601764 • Calved: 04/26/22

Duff-JC 4Real 16250
Duff Real Deal 19115
 Duff Queen 0570 3570

Connealy Packer 547 #
Shipwheel Gloria 322 #
 S Gloria 209 #

Duff Napoleon 232
 Duff Amigo 927K Juanada 071
 SA Ranch Hand 8185 075
 Duff Queen Mother 5146 0570

Feltons Meat Packer 62 #
 Bestrelle of Conanga 539
 Leachman Right Time #
 S Gloria 0118



EPDs					
CED	1				
BW	2.4				
WW	52				
YW	88				
MILK	23				
SC	.26				
MB	.42				
RE	.25				
FAT	.028				
Claw	.41				
Angle	.46				

BW	205 WT	WR	YR	Scrotal	SC
90	704	106	105	38	
Dam BR	Dam WR	Dam YR	MGD BR	MGD WR	MGD YR
6/110	6/107	6/104	9/99	9/103	8/101

Calving Ease Score: 1 Front Foot Score: 4.5
 Disposition Score: 4 Hind Foot Score: 4.5

- A good looking, athletic bull with nice muscle expression. He's the natural calf by the Gloria 322 donor.
- Donor dam has 12 ET sons in this sale.



MVCC 5005-925 - Sire of Lot 37



38 SHIPWHEEL REAL DEAL 2545

Reg: 20601742 • Calved: 04/01/22



Duff-JC 4Real 16250
Duff Real Deal 19115
 Duff Queen 0570 3570

Duff Napoleon 232
 Duff Amigo 927K Juanada 071
 SA Ranch Hand 8185 075
 Duff Queen Mother 5146 0570

Shipwheel Keystone 7543
Shipwheel Crissy 079
 Shipwheel Crissy 403

Myers Keystone M263
 Shipwheel Chloe 5125
 Connealy Packer 547 #
 Apexette Crissy 4425

EPDs	
CED	5
BW	.9
WW	60
YW	91
MILK	15

BW	205 WT	WR	YR	Scrotal	SC
79	725	111	99	34	-.24
Dam BR	Dam WR	Dam YR	MGD BR	MGD WR	MGD YR
1/101	1/111	1/99	7/96	7/98	6/99
					FAT .029
					Claw .35
					Angle .42

- Calving Ease Score: 3 Front Foot Score: 4
 Disposition Score: 4 Hind Foot Score: 4
- A medium framed, positive \$EN calving ease bull.
 - First calf heifer dam is very feminine with a tidy udder and small teats. She bred back first cycle A.I. with an 82 lb. Rainmaker 0538 bull calf.

40 SHIPWHEEL AB HONCHO 2655

Reg: +20601840 • Calved: 04/23/22



Bar Wick Eureka 943 310
Duff Honcho 426
 Duff BI 619 LadyPop 1017

O C C Eureka 865E #
 O C C Dixie Erica 943D
 Duff Basic Instinct 6501
 Duff NL B351 Lady Pop 619

Connealy Thunder #
Apexette Rachel 2011
 Apexette Rachel 0048

Baldrige Kaboom K243 KCF #
 Parka of Conanga 241 #
 Apex Focus 053
 Apexette Rachel 5089 #

EPDs	
CED	11
BW	-1.5
WW	44
YW	79
MILK	33

BW	205 WT	WR	YR	Scrotal	SC
84	633	103	98	35	1.14
Dam BR	Dam WR	Dam YR	MGD BR	MGD WR	MGD YR
8/93	8/99	7/103	7/95	7/98	4/101
					FAT .009
					Claw .34
					Angle .38

- Calving Ease Score: 3 Front Foot Score: 4.25
 Disposition Score: 4 Hind Foot Score: 4.25
- A well-constructed, calving ease son of the great 2011 donor cow. This guy will leave a tremendous set of females.
 - Donor dam is an ideal angus female with perfect feet. She is 11 yrs. old and still in production.

39 SHIPWHEEL EXECUTIVE LAW 2652

Reg: +20601820 • Calved: 04/18/22



PM Executive Decision 5'17
W Sunrise Executive Law 507H
 HF Tibbie 27D

Bar-E-L Natural Law 52Y
 PM Blossom 124'13
 HF Syndicate 213Z
 HF Tibbie 162B

Connealy Packer 547 #
Shipwheel Gloria 322 #
 S Gloria 209 #

Feltons Meat Packer 62 #
 Bestrelle of Conanga 539
 Leachman Right Time #
 S Gloria 0118

EPDs	
CED	4
BW	2.2
WW	59
YW	111
MILK	27

BW	205 WT	WR	YR	Scrotal	SC
80	580	100	100	34	1.19
Dam BR	Dam WR	Dam YR	MGD BR	MGD WR	MGD YR
6/110	6/107	6/104	9/99	9/103	8/101
					FAT -.016
					Claw .45
					Angle .47

- Calving Ease Score: 1 Front Foot Score: 3.75
 Disposition Score: 4.5 Hind Foot Score: 3.75
- A good long, deep, gentle bull here. He covers all the bases.
 - Full ET brothers to lots 29, 55, 81, 83, 84, 85, 106.



Austin on a ranch bronc



43

SHIPWHEEL ESSENTIAL 2611

Reg: 20593570 • Calved: 04/18/22

Shipwheel Resource 5621
Shipwheel Essential 9536
 Shipwheel Pinetop 720 #

S A V Resource 1441 #
 Apex Eriskay 5506 #
 LT Regions 4110
 Shipwheel Pinetop 572
 BPF DR J 2110
 Shipwheel Dr J In Focus 9560
 BPF Forever Lady 651
 S A V Iron Mountain 8066 #
 Dr J Ms Apex 053 L35



EPDs	
CED	13
BW	-.4
WW	74
YW	133
MILK	19

BW	205 WT	WR	YR	Scrotal	SC
66	721	109	98	41	1.45
Dam BR	Dam WR	Dam YR	MGD BR	MGD WR	MGD YR
6/92	6/102	4/102	2/93	2/98	1/113

Calving Ease Score: 3 Front Foot Score: 3.75
 Disposition Score: 4.5 Hind Foot Score: 4

- A good all around, deep middled, big-nutted calving ease bull. Look him up. A maternal brother was a top seller to Ford's Creek Colony, MT in 2022.
- Dam is a super deep, easy fleshing, nice uddered cow that has done a great job here.

41

SHIPWHEEL ESSENTIAL 2675

Reg: +20601818 • Calved: 05/03/22

Shipwheel Resource 5621
Shipwheel Essential 9536
 Shipwheel Pinetop 720 #

Sitz Far & Wide 6908
Shipwheel Chloe 4121
 Shipwheel Chloe 970

S A V Resource 1441 #
 Apex Eriskay 5506 #
 LT Regions 4110
 Shipwheel Pinetop 572
 Sitz Upward 307R #
 Sitz Barbaramere Nell 653
 Sitz Rainmaker 6536
 Apexette Chloe 2050



EPDs	
CED	7
BW	2.6
WW	60
YW	108
MILK	22
SC	1.56
MB	.42
RE	.64
FAT	.026
Claw	.47
Angle	.50

BW	205 WT	WR	YR	Scrotal	SC
94	597	100	100	35	1.56
Dam BR	Dam WR	Dam YR	MGD BR	MGD WR	MGD YR
6/104	6/103	6/102	9/106	9/105	9/105

Calving Ease Score: 1 Front Foot Score: 3.75
 Disposition Score: 4.5 Hind Foot Score: 4

- An athletic, attractive ET bull from a very consistent flush.
- Full ET brother to lots 12, 64, 65, 103.



791 - Maternal sister to Lot 44

42

SHIPWHEEL COALITION 2656

Reg: +20601855 • Calved: 05/01/22

HF Syndicate 213Z
U-2 Coalition 206C #
 U2 Erelite 109Z

S Chisum 6175 #
Shipwheel Pinetop 251
 DR J Miss Guru l6

Connealy Consensus 7229 #
 HF Miss Blackcap 27R
 Young Dale Xclusive 25X
 U-2 Erelite 1X
 S Alliance 3313
 S Gloria 464 #
 Master Guru 0641
 DR J Miss Trav 722 B17



EPDs	
CED	8
BW	2.0
WW	49
YW	91
MILK	24
SC	.94
MB	.34
RE	.42
FAT	.003
Claw	.40
Angle	.44

BW	205 WT	WR	YR	Scrotal	SC
98	648	100	100	35	.94
Dam BR	Dam WR	Dam YR	MGD BR	MGD WR	MGD YR
8/98	8/100	7/100	12/97	12/98	7/100

Calving Ease Score: 2 Front Foot Score: 4.5
 Disposition Score: 5 Hind Foot Score: 4.5

- Time tested, proven maternal pedigree on this long spined, good-looking, gentle bull. These flush brothers will leave outstanding daughters and sons with extra length and muscle.
- Donor dam is an ideal angus cow and is currently 11 yrs. old and still in production. Longevity in this cow family.
- Donor granddam.
- 3rd dam raised 12 calves @ 107 WR.
- 4th dam raised 11 calves @ 102 WR.
- Full ET brother to lots 52, 71, 97, 98.

44

SHIPWHEEL ESSENTIAL 2634

Reg: 20593555 • Calved: 04/24/22

Shipwheel Resource 5621
Shipwheel Essential 9536
 Shipwheel Pinetop 720 #

Sitz Far & Wide 6908
Shipwheel Georgina 151
 Dr J Miss Apex Focus 053-L60

S A V Resource 1441 #
 Apex Eriskay 5506 #
 LT Regions 4110
 Shipwheel Pinetop 572
 Sitz Upward 307R #
 Sitz Barbaramere Nell 653
 Apex Focus 053
 DR J Miss Time E31



EPDs	
CED	6
BW	0.7
WW	65
YW	110
MILK	21

BW	205 WT	WR	YR	Scrotal	SC
78	722	109	103	36	1.38
Dam BR	Dam WR	Dam YR	MGD BR	MGD WR	MGD YR
10/97	10/100	8/100	4/103	4/98	2/100

Calving Ease Score: 2 Front Foot Score: 4
 Disposition Score: 4.25 Hind Foot Score: 4

- A dandy, deep middled, well made gentle bull out of a great old cow. Impressive genomic profile.
- Dam is a really nice uddered, super gentle cow that is 12 yrs. old and still going strong.



Sale Day



2022



45 SHIPWHEEL RAINMAKER 2528

Reg: 20601800 • Calved: 04/16/22



Basin Rainmaker 2704
Basin Rainmaker 4404
Basin Joy 1036

Basin Rainmaker P175 #
Basin Erica 7520 BV #
Basin Payweight 107S #
Basin Joy 566T
Coleman Charlo 0256 #
S A V Blackcap May 4136
Connealy Earnan 076E #
DR J Ms Apex Focus 053 M85

S A V Rairdance 6848 #
Shipwheel Enchantress 9109
Shipwheel Enchantress 4104

EPDs	
CED	6
BW	2.8
WW	69
YW	116
MILK	29
SC	.69
MB	.59
RE	1.14
FAT	-.009
Claw	.35
Angle	.37

BW	205 WT	WR	YR	Scrotal	SC
93	720	111	105	35	
Dam BR	Dam WR	Dam YR	MGD BR	MGD WR	MGD YR
2/107	2/107	2/102	6/95	6/99	3/100

Calving Ease Score: 1 Front Foot Score: 4.25
Disposition Score: 4.5 Hind Foot Score: 4.25

- A nice, gentle, long spined bull with outstanding feet, milk and ribeye rankings.
- Dam is a fancy, gentle, young cow with a very nice udder and off to a great start.
- A full brother sold to Justin Roudebush in 2022.

46 SHIPWHEEL ESSENTIAL 2603

Reg: 20593577 • Calved: 04/24/22



Shipwheel Resource 5621
Shipwheel Essential 9536
Shipwheel Pinetop 720 #

S A V Resource 1441 #
Apex Eriskay 5506 #
LT Regions 4110
Shipwheel Pinetop 572
TC Forthright 9284
TC Blackbird 0022 #
BPF 752 Freestyle 0111
DR J Miss Guru I60

TC Forthright 340
Shipwheel Georgina 621
Shipwheel Georgina 4138 #

EPDs	
CED	7
BW	-.3
WW	51
YW	96
MILK	24
SC	1.54
MB	.40
RE	.53
FAT	.002
Claw	.43
Angle	.59

BW	205 WT	WR	YR	Scrotal	SC
84	623	94	99	39	
Dam BR	Dam WR	Dam YR	MGD BR	MGD WR	MGD YR
4/99	4/98	3/98	5/114	5/106	3/105

Calving Ease Score: 2 Front Foot Score: 3.75
Disposition Score: 4.25 Hind Foot Score: 4

- A sweet fronted, nice profiling, medium framed, gentle bull.
- Dam is a super gentle, very nice uddered consistent producer.

47 SHIPWHEEL RAINMAKER 2506

Reg: 20601794 • Calved: 04/21/22



Basin Rainmaker 2704
Basin Rainmaker 4404
Basin Joy 1036

Basin Rainmaker P175 #
Basin Erica 7520 BV #
Basin Payweight 107S #
Basin Joy 566T
Rito 707 of Ideal 3407 7075
S A V Blackcap May 4136
Sitz Far & Wide 6908
Shipwheel Pinetop 0244

S A V Resource 1441 #
Shipwheel Pinetop 857
Shipwheel Pinetop 472

EPDs	
CED	1
BW	2.1
WW	50
YW	88
MILK	25
SC	1.05
MB	.55
RE	.67
FAT	.038
Claw	.27
Angle	.31

BW	205 WT	WR	YR	Scrotal	SC
95	615	94	98	36	
Dam BR	Dam WR	Dam YR	MGD BR	MGD WR	MGD YR
3/99	3/92	1/98	7/113	7/97	6/99

Calving Ease Score: 1 Front Foot Score: 4.5
Disposition Score: 4.5 Hind Foot Score: 4.5

- If you are looking for a gentle, excellent footed, long bodied bull that will leave tremendous daughters, look this guy up. Positive \$EN bull.
- Dam is a pretty, long bodied, wedge-shaped cow.

48 SHIPWHEEL AB CAPITALIST 2639

Reg: 20664971 • Calved: 05/04/22



LD Capitalist 316 #
Braun Creek Capitalist 938
Braun Creek Merle 718

Connealy Capitalist 028 #
LD Dixie Erica 2053
Shipwheel Far & Wide 1558
Braun Creek Merle 556
Ideal 4223 of 1168 Blkbrd
Shipwheel Lady 569
S A V Resource 1441 #
Apexette Rachel 2011

Shipwheel Ideal 4223 7571
Shipwheel BLS Rachel 966
Shipwheel BLS Rachel 725

EPDs	
CED	14
BW	-.4
WW	64
YW	113
MILK	24
SC	.64
MB	.70
RE	.52
FAT	.043
Claw	.38
Angle	.50

BW	205 WT	WR	YR	Scrotal	SC
63	745	112	104	36	
Dam BR	Dam WR	Dam YR	MGD BR	MGD WR	MGD YR
2/82	2/111	2/105	4/97	4/103	4/104

Calving Ease Score: 3 Front Foot Score: 4.5
Disposition Score: 5 Hind Foot Score: 4.5

- An excellent footed bull with a royal pedigree. He's been a very active bull in the pen. His sire has proven himself to be an excellent breeding bull and I expect Lot 48 to be the same.
- Donor dam is an ideal angus cow. She raised a top seller to Scott Knutson, MT in 2022 that we are also using, Shipwheel BLS Bravo 1536.
- Donor granddam.
- Donor 3rd dam and dam to lots 20, 21, 40.



Shipwheel BLS Bravo 1536 - Maternal brother to Lot 48



Shipwheel BLS Rachel 966 - Dam of Lot 48



Shipwheel Bravo 1605 - Maternal brother to Lot 49

51

SHIPWHEEL CAPITALIST 2503

Reg: 20644636 • Calved: 04/29/22

LD Capitalist 316 #
Braun Creek Capitalist 938
Braun Creek Merle 718

Connealy Capitalist 028 #
LD Dixie Erica 2053
Shipwheel Far & Wide 1558
Braun Creek Merle 556
R R Rito 707 #
Coleman Donna 714
WMR Timeless 458 #
WMR Pride 857



EPDs	
CED	7
BW	2.4
WW	62
YW	105
MILK	22
SC	.71
MB	.23
RE	.57
FAT	.022
Claw	.33
Angle	.41

BW	205 WT	WR	YR	Scrotal	
87	657	101	105	38	
Dam BR	Dam WR	Dam YR	MGD BR	MGD WR	MGD YR
2/98	2/99	2/101	8/101	8/109	8/107

Calving Ease Score: 1 Front Foot Score: 4.5
Disposition Score: 5 Hind Foot Score: 5

- A balanced bull with some very influential cows in his background.
- Dam is a medium framed, nice uddered, easy fleshing cow.
- Donor Granddam Pride 03.

49

SHIPWHEEL PACKER 2588

Reg: 20644645 • Calved: 05/17/22

Connealy Packer 547 #
Shipwheel Packer 3505
Shipwheel Black Pride 1124

Shipwheel Upward 2517
Shipwheel Chloe 743
Shipwheel Chloe 5124

Feltons Meat Packer 62 #
Bestrelle of Conanga 539
Sitz Far & Wide 6908
DR J Miss ND 878-J61 #

Sitz Upward 307R #
Shipwheel Enchantress 8184
CCAR Uncommon Z317
Shipwheel Chloe 916



EPDs	
CED	3
BW	.3
WW	65
YW	111
MILK	26

BW	205 WT	WR	YR	Scrotal	SC
78	704	106	109	38	1.45
Dam BR	Dam WR	Dam YR	MGD BR	MGD WR	MGD YR
4/91	4/102	4/102	3/106	3/98	2/101

Calving Ease Score: 1 Front Foot Score: 4
Disposition Score: 4.25 Hind Foot Score: 4

- A well-balanced, positive \$EN bull backed by a strong maternal pedigree.
- Dam is one of our treasured 2517 daughters. They are really making an impact. Wish we had more of them. A maternal brother was a top seller to Ox Bow Ranch, MT in 2022.

52

SHIPWHEEL COALITION 2658

Reg: +20601846 • Calved: 04/23/22

HF Syndicate 213Z
U-2 Coalition 206C #
U2 Erelite 109Z

S Chisum 6175 #
Shipwheel Pinetop 251
DR J Miss Guru I6

Connealy Consensus 7229 #
HF Miss Blackcap 27R
Young Dale Xclusive 25X
U-2 Erelite 1X

S Alliance 3313
S Gloria 464 #
Master Guru 0641
DR J Miss Trav 722 B17



EPDs	
CED	12
BW	.3
WW	48
YW	95
MILK	25

BW	205 WT	WR	YR	Scrotal	SC
85	656	100	100	37.5	.72
Dam BR	Dam WR	Dam YR	MGD BR	MGD WR	MGD YR
8/98	8/100	7/100	12/97	12/98	7/100

Calving Ease Score: 3 Front Foot Score: 4
Disposition Score: 4.25 Hind Foot Score: 4

- A good, long, gentle, positive \$EN bull. Keep his daughters.
- Full ET brother to lots 42, 71, 97, 98.

50

SHIPWHEEL ESSENTIAL 2686

Reg: +20601810 • Calved: 05/01/22

Shipwheel Resource 5621
Shipwheel Essential 9536
Shipwheel Pinetop 720 #

S Chisum 6175 #
Shipwheel Pinetop 251
DR J Miss Guru I6

S A V Resource 1441 #
Apex Eriskay 5506 #
LT Regions 4110
Shipwheel Pinetop 572

S Alliance 3313
S Gloria 464 #
Master Guru 0641
DR J Miss Trav 722 B17



EPDs	
CED	3
BW	3.5
WW	56
YW	97
MILK	25

BW	205 WT	WR	YR	Scrotal	SC
102	703	100	100	39	1.03
Dam BR	Dam WR	Dam YR	MGD BR	MGD WR	MGD YR
8/98	8/100	7/100	12/97	12/98	7/100

Calving Ease Score: 1 Front Foot Score: 3.5
Disposition Score: 4.5 Hind Foot Score: 3

- A long spined, gentle bull with a strong, time-tested maternal lineage.
- Donor dam is a super gentle, easy fleshing cow with a nice udder. She is currently 11 yrs. old and still in production.
- Donor granddam.
- 3rd dam raised 12 calves @ 107 WR.
- 4th dam raised 11 calves @ 102 WR.

53

SHIPWHEEL RAINMAKER 2679

Reg: +20601824 • Calved: 04/24/22

Basin Rainmaker 2704
Basin Rainmaker 4404
Basin Joy 1036

Connealy Packer 547 #
Shipwheel Gloria 322 #
S Gloria 209 #

Basin Rainmaker P175 #
Basin Erica 7520 BV #
Basin Payweight 107S #
Basin Joy 566T

Feltons Meat Packer 62 #
Bestrelle of Conanga 539
Leachman Right Time #
S Gloria 0118



EPDs	
CED	2
BW	3.1
WW	62
YW	111
MILK	32

BW	205 WT	WR	YR	Scrotal	SC
82	593	100	100	39	1.46
Dam BR	Dam WR	Dam YR	MGD BR	MGD WR	MGD YR
6/110	6/107	6/104	9/99	9/103	8/101

Calving Ease Score: 1 Front Foot Score: 4.25
Disposition Score: 4 Hind Foot Score: 4.25

- A long, gentle, great footed bull with a who's, who maternal pedigree.
- Full ET brother to lots 72, 80, 100.



SHIPWHEEL CONCHO 2633

Reg: 20593554 • Calved: 04/24/22



Vermilion Spur E870
JVC Concho 28
JVC Henrietta Pride 333

Connealy Spur #
Vermilion Lass 4942
C C A Uno 049 #
JVC Henrietta Pride Y137
Sitz Upward 307R #
Sitz Barbaramere Nell 653
Bon View New Design 878 #
DR J Miss Time B86

EPDs	
CED	-1
BW	3.8
WW	68
YW	110
MILK	37
SC	1.48
MB	.28
RE	.27
FAT	.016
Claw	.56
Angle	.50

Sitz Far & Wide 6908
Shipwheel Verona 221 #
DR J Miss ND 878-J88 #

BW	205 WT	WR	YR	Scrotal	
75	716	108	99	35	
Dam BR	Dam WR	Dam YR	MGD BR	MGD WR	MGD YR
9/98	9/105	8/102	9/107	9/107	8/105

Calving Ease Score: 1 Front Foot Score: 4
Disposition Score: 4.25 Hind Foot Score: 4

- A long spined bull that will sire heavy steers and keeper kind replacements. Powerful cow family.
- Pathfinder dam is currently 11 yrs. old and never misses.
- Pathfinder granddam.



SHIPWHEEL EXECUTIVE LAW 2646

Reg: +20601854 • Calved: 04/20/22



PM Executive Decision 5'17
W Sunrise Executive Law 507H
HF Tibbie 27D

Bar-E-L Natural Law 52Y
PM Blossom 124'13
HF Syndicate 213Z
HF Tibbie 162B

EPDs	
CED	2
BW	2.3
WW	56
YW	100
MILK	23
SC	.55
MB	.29
RE	.78
FAT	-.006
Claw	.56
Angle	.48

Connealy Packer 547 #
Shipwheel Gloria 322 #
S Gloria 209 #

Feltons Meat Packer 62 #
Bestrelle of Conanga 539
Leachman Right Time #
S Gloria 0118

BW	205 WT	WR	YR	Scrotal	
80	642	104	104	35	
Dam BR	Dam WR	Dam YR	MGD BR	MGD WR	MGD YR
6/110	6/107	6/104	9/99	9/103	8/101

Calving Ease Score: 1 Front Foot Score: 4
Disposition Score: 4 Hind Foot Score: 4

- Full ET brothers to lots 29, 39, 81, 83, 83, 84, 85, 106.



SHIPWHEEL REAL DEAL 2620

Reg: 20601767 • Calved: 04/19/22



Duff-JC 4Real 16250
Duff Real Deal 19115
Duff Queen 0570 3570

Duff Napoleon 232
Duff Amigo 927K Juanada 071
SA Ranch Hand 8185 075
Duff Queen Mother 5146 0570

EPDs	
CED	9
BW	-.5
WW	51
YW	83
MILK	18
SC	-.73
MB	.49
RE	.30
FAT	.024
Claw	.38
Angle	.45

Connealy Earnan 076E #
Shipwheel Eriskay 433 #
Shipwheel Eriskay 173

Connealy Consensus #
Brazila of Conanga 3991 839A
Kesslers Frontman R001 #
Shipwheel Eriskay 922

BW	205 WT	WR	YR	Scrotal	
71	659	99	96	33	
Dam BR	Dam WR	Dam YR	MGD BR	MGD WR	MGD YR
7/95	7/101	7/100	3/88	3/95	2/95

Calving Ease Score: 3 Front Foot Score: 4.5
Disposition Score: 4 Hind Foot Score: 4.5

- An attractive, athletic, long strided bull. He will get the heifers bred.
- Pathfinder dam is a long bodied thick made, consistent producer. She is currently nine yrs. old.



SHIPWHEEL COALITION 2563

Reg: 20601754 • Calved: 03/27/22



HF Syndicate 213Z
U-2 Coalition 206C #
U2 Erelite 109Z

Connealy Consensus 7229 #
HF Miss Blackcap 27R
Young Dale Xclusive 25X
U-2 Erelite 1X

EPDs	
CED	18
BW	-1.1
WW	53
YW	98
MILK	18
SC	1.27
MB	.65
RE	.63
FAT	-.040
Claw	.26
Angle	.41

LD Capitalist 316 #
Shipwheel Lady 0119
DR J Ms Danny Boy M63

Connealy Capitalist 028 #
LD Dixie Erica 2053
Connealy Danny Boy #
DR J Miss Apex 053-K115

BW	205 WT	WR	YR	Scrotal	
60	608	93	96	36	
Dam BR	Dam WR	Dam YR	MGD BR	MGD WR	MGD YR
1/79	1/93	1/96	13/96	13/98	11/99

Calving Ease Score: 3 Front Foot Score: 4
Disposition Score: 4.5 Hind Foot Score: 4

- A sleep all night heifer bull with good muscle expression and genomic foot scores.
- First calf heifer dam is fancy, excellent uddered and bred back first cycle A.I. with a 79lb. Rainmaker 0538 bull calf.
- Granddam produced until she was 16 yrs. old.





SHIPWHEEL REAL DEAL 2543

Reg: 20601739 • Calved: 03/27/22



Duff-JC 4Real 16250
Duff Real Deal 19115
Duff Queen 0570 3570

Duff Napoleon 232
Duff Amigo 927K Juanada 071
SA Ranch Hand 8185 075
Duff Queen Mother 5146 0570

Shipwheel Resource 5621
Shipwheel Chloe 060
Shipwheel Chloe 8150

SA V Resource 1441 #
Apex Eriskay 5506 #
Bruin Torque 5261
Shipwheel Chloe 274

EPDs	
CED	13
BW	-1.4
WW	49
YW	81
MILK	24
SC	-.14
MB	.06
RE	.21
FAT	-.011
Claw	.39
Angle	.54

BW	205 WT	WR	YR	Scrotal	
67	620	95	100	32.5	
Dam BR	Dam WR	Dam YR	MGD BR	MGD WR	MGD YR
1/87	1/95	1/100	3/102	3/98	2/101

Calving Ease Score: 3 Front Foot Score: 4.25
Disposition Score: 3.75 Hind Foot Score: 4.5

- A sleep all night, attractive made bull. He moves effortlessly and is a little heads up.
- First calf heifers dam has "A" ratings for udder, teat disposition and mothering ability. She bred back first cycle A.I. with an 80 lb. S Right Time bull calf.



SHIPWHEEL CONCHO 2637

Reg: 20644652 • Calved: 05/30/22



Vermilion Spur E870
JVC Concho 28
JVC Henrietta Pride 333

Connealy Spur #
Vermilion Lass 4942
C C A Uno 049 #
JVC Henrietta Pride Y137

SA V Net Worth 4200 #
Shipwheel Lady 0122
DR J Miss Sana-J50 #

SA V 8180 Traveler 004 #
SA V May 2410
MA Mr Sana 205 of JN
DR J Miss Bon View 473 B60

EPDs	
CED	1
BW	4.8
WW	65
YW	110
MILK	23
SC	1.1
MB	.47
RE	.24
FAT	.045
Claw	.48
Angle	.51

BW	205 WT	WR	YR	Scrotal	
94	694	105	105	37	
Dam BR	Dam WR	Dam YR	MGD BR	MGD WR	MGD YR
11/102	11/104	9/104	6/94	6/103	4/100

Calving Ease Score: 1 Front Foot Score: 4
Disposition Score: 4 Hind Foot Score: 4

- A good-looking rascal from one of the best old cows on the ranch. Genomics indicate excellent growth but keeps \$EN in check.
- Dam is currently 13 yrs. old and still in production. She is one of our last excellent uddered, hardy, Net Worth cows.
- Pathfinder granddam.



SHIPWHEEL REAL DEAL 2598

Reg: 20601781 • Calved: 04/19/22



Duff-JC 4Real 16250
Duff Real Deal 19115
Duff Queen 0570 3570

Duff Napoleon 232
Duff Amigo 927K Juanada 071
SA Ranch Hand 8185 075
Duff Queen Mother 5146 0570

Shipwheel Montana 2600
Shipwheel Eriskay 669 #
Shipwheel Eriskay 175 #

S Chisum 6175 #
Dr J Ms Wide Track 374 M15
Kesslers Frontman R001 #
Shipwheel Eriskay 930

EPDs	
CED	5
BW	2.1
WW	55
YW	88
MILK	21
SC	.35
MB	.34
RE	.40
FAT	.035
Claw	.58
Angle	.55

BW	205 WT	WR	YR	Scrotal	
80	633	95	103	34	
Dam BR	Dam WR	Dam YR	MGD BR	MGD WR	MGD YR
5/100	5/105	4/104	5/102	5/105	5/104

Calving Ease Score: 1 Front Foot Score: 3.75
Disposition Score: 4.5 Hind Foot Score: 4

- A medium framed, docile bull equipped with growth and maternal.
- Pathfinder Montana dam is super long bodied and gentle with a nice udder.
- Pathfinder granddam.





61 SHIPWHEEL REAL DEAL 2600

Reg: 20601780 • Calved: 05/01/22



Duff-JC 4Real 16250
Duff Real Deal 19115
Duff Queen 0570 3570

Duff Napoleon 232
Duff Amigo 927K Juanada 071
SA Ranch Hand 8185 075
Duff Queen Mother 5146 0570

CTS Remedy 1T01 #
Shipwheel Elba 665
Shipwheel Elba 283

Connealy Thunder #
CTS 7V03 Bellemere Maid 9T02
Connealy Final Product #
Shipwheel Elba 0126

EPDs	
CED	3
BW	.1
WW	41
YW	74
MILK	25
SC	.46
MB	.49
RE	.15
FAT	.022
Claw	.32
Angle	.44

BW	205 WT	WR	YR	Scrotal	SC
87	687	103	101	38	
Dam BR	Dam WR	Dam YR	MGD BR	MGD WR	MGD YR
4/110	4/103	3/104	5/107	5/106	3/103

Calving Ease Score: 2 Front Foot Score: 4.5
Disposition Score: 5 Hind Foot Score: 4.5

- A smaller framed bull with a +19 \$EN. He will sire cattle that won't fall out when mother nature brings the hammer down.
- Dam is a long-bodied, wedge shaped, big hipped stunning cow with a nice udder.
- A maternal brother by Dreamer was a top seller in 2022 to Rappold Ranch, MT.

62 SHIPWHEEL REAL DEAL 2534

Reg: 20601722 • Calved: 04/03/22



Duff-JC 4Real 16250
Duff Real Deal 19115
Duff Queen 0570 3570

Duff Napoleon 232
Duff Amigo 927K Juanada 071
SA Ranch Hand 8185 075
Duff Queen Mother 5146 0570

Pyramid Strategy 4086
Shipwheel Blackwood 009
Shipwheel Blackwood 730 #

SA V Resource 1441 #
Glacial 20N BlackbirdEve 29R
Basin Paycheck 5249 #
Shipwheel Blackwood 4122

EPDs	
CED	13
BW	-.1
WW	51
YW	78
MILK	20
SC	-.60
MB	.56
RE	.51
FAT	.014
Claw	.43
Angle	.33

BW	205 WT	WR	YR	Scrotal	SC
66	655	101	96	34.5	
Dam BR	Dam WR	Dam YR	MGD BR	MGD WR	MGD YR
1/86	1/101	1/96	3/118	3/114	3/110

Calving Ease Score: 3 Front Foot Score: 4.5
Disposition Score: 4 Hind Foot Score: 4.5

- A nice profile and deep middle to this calving ease, +12 \$EN bull.
- First calf heifer dam is long bodied, easy fleshing with a gorgeous udder. She just weaned off one of our top heifer calves by Confederate for her second.



63 SHIPWHEEL RAINMAKER 2552

Reg: 20601864 • Calved: 03/29/22



Basin Rainmaker 2704
Basin Rainmaker 4404
Basin Joy 1036

Basin Rainmaker P175 #
Basin Erica 7520 BV #
Basin Payweight 107S #
Basin Joy 566T

U-2 Coalition 206C #
Shipwheel Enchantress 098
Shipwheel Enchantress 190

HF Syndicate 213Z
U2 Erelite 109Z
Shipwheel Chinook #
Shipwheel Enchantress 965

EPDs	
CED	11
BW	-.3
WW	68
YW	111
MILK	29
SC	1.51
MB	.63
RE	.37
FAT	.058
Claw	.35
Angle	.40

BW	205 WT	WR	YR	Scrotal	SC
70	684	105	97	40	
Dam BR	Dam WR	Dam YR	MGD BR	MGD WR	MGD YR
1/91	1/105	1/97	8/107	8/102	8/101

Calving Ease Score: 3 Front Foot Score: 4.5
Disposition Score: 4 Hind Foot Score: 4.5

- An excellent footed, big nutted calving ease bull that will sire beautiful females.
- First calf heifer dam is moderate, super gentle with an excellent udder. She bred back first cycle A.I. with a 79 lb. Dreamer heifer calf.

LOTS 64 & 65 FULL ET BROTHERS



64 SHIPWHEEL ESSENTIAL 2672

Reg: +20601830 • Calved: 05/03/22



EPDs	
CED	5
BW	1.6
WW	64
YW	110
MILK	25

Shipwheel Resource 5621
Shipwheel Essential 9536
Shipwheel Pinetop 720 #

SA V Resource 1441 #
Apex Eriskay 5506 #
LT Regions 4110
Shipwheel Pinetop 572
Sitz Upward 307R #
Sitz Barbaramere Nell 653
Sitz Rainmaker 6536
Apexette Chloe 2050

Sitz Far & Wide 6908
Shipwheel Chloe 4121
Shipwheel Chloe 970

BW	205 WT	WR	YR	Scrotal	SC	1.16	
89	665	100	100	38	MB	.44	
Dam BR	Dam WR	Dam YR	MGD BR	MGD WR	MGD YR	RE	
6/104	6/103	6/102	9/106	9/105	9/105	.86	
						FAT	.016
						Claw	.41
						Angle	.44

Calving Ease Score: 2 Front Foot Score: 4
Disposition Score: 4 Hind Foot Score: 40

- An attractive bull with a good top, quarter, length and front end.
- Full ET brother to lots 12, 41, 65, 103.

65 SHIPWHEEL ESSENTIAL 2671

Reg: +20601851 • Calved: 04/28/22



EPDs	
CED	2
BW	3.1
WW	63
YW	111
MILK	30

Shipwheel Resource 5621
Shipwheel Essential 9536
Shipwheel Pinetop 720 #

SA V Resource 1441 #
Apex Eriskay 5506 #
LT Regions 4110
Shipwheel Pinetop 572
Sitz Upward 307R #
Sitz Barbaramere Nell 653
Sitz Rainmaker 6536
Apexette Chloe 2050

Sitz Far & Wide 6908
Shipwheel Chloe 4121
Shipwheel Chloe 970

BW	205 WT	WR	YR	Scrotal	SC	.62	
97	563	100	100	33.5	MB	.12	
Dam BR	Dam WR	Dam YR	MGD BR	MGD WR	MGD YR	RE	
6/104	6/103	6/102	9/106	9/105	9/105	.66	
						FAT	.002
						Claw	.36
						Angle	.48

Calving Ease Score: 1 Front Foot Score: 4
Disposition Score: 4 Hind Foot Score: 4

- A dandy here, very similar to his other flush brothers.
- Performance and maternal in these guys. And look good doing it.
- Full ET brother to lots 12, 41, 64, 103.

66 SHIPWHEEL CAPITALIST 2513

Reg: 20750587 • Calved: 04/30/22



LD Capitalist 316 #
Braun Creek Capitalist 938
Braun Creek Merle 718

Connealy Capitalist 028 #
LD Dixie Erica 2053
Shipwheel Far & Wide 1558
Braun Creek Merle 556
Shipwheel Ideal 4223 7571
Ideal 4223 of 1168 Blkbrd
Shipwheel Lady 569
Shipwheel Montana 2600
Shipwheel Chloe 4121

EPDs	
CED	4
BW	1.5
WW	66
YW	114
MILK	22
SC	.69
MB	.42
RE	.68
FAT	.006
Claw	.43
Angle	.47

Shipwheel Ideal 4223 7571
Shipwheel Chloe 931
Shipwheel Chloe 741

BW	205 WT	WR	YR	Scrotal	SC	.69	
85	687	106	98	37	MB	.42	
Dam BR	Dam WR	Dam YR	MGD BR	MGD WR	MGD YR	RE	
2/106	2/105	2/101	2/100	2/107	2/106	.68	
						FAT	.006
						Claw	.43
						Angle	.47

Calving Ease Score: 1 Front Foot Score: 4.5
Disposition Score: 4 Hind Foot Score: 4.5

- A medium framed, well-balanced bull, double bred to Far and Wide. His daughters will hold up when times get tough.
- Dam is a super deep, soggy, easy fleshing young cow.
- Donor 3rd dam has 8 ET sons selling.
- A maternal brother was a top seller to Jon Peebles, MT in 2022.





67 SHIPWHEEL ESSENTIAL 2510
 Reg: 20601797 • Calved: 04/19/22

Shipwheel Resource 5621
Shipwheel Essential 9536
 Shipwheel Pinetop 720 #

S A V Resource 1441 #
 Apex Eriskay 5506 #
 LT Regions 4110
 Shipwheel Pinetop 572

Mc Cumber Armour 7148
Shipwheel Black Pride 933
 Shipwheel Black Pride 6104

Mc Cumber Titanium 5005
 Miss Wix 2003 of Mc Cumber #
 Shipwheel Montana 2600
 Shipwheel Black Pride 277



BW	205 WT	WR	YR	Scrotal	SC	EPDs
93	682	105	104	38	1.23	CED 2
						BW 2.4
						WW 61
						YW 106
						MILK 19

Calving Ease Score: 1 Front Foot Score: 4
 Disposition Score: 4 Hind Foot Score: 4

- A moderate framed, good looking, cow maker type bull backed by powerful maternal.
- Dam is an ideal angus female. She's perfect uddered easy fleshing and moderate framed.

69 SHIPWHEEL REAL DEAL 2624
 Reg: 20601768 • Calved: 05/01/22

Duff-JC 4Real 16250
Duff Real Deal 19115
 Duff Queen 0570 3570

Duff Napoleon 232
 Duff Amigo 927K Juanada 071
 SA Ranch Hand 8185 075
 Duff Queen Mother 5146 0570

Sitz Far & Wide 6908
Shipwheel Chloe 4121
 Shipwheel Chloe 970

Sitz Upward 307R #
 Sitz Barbamere Nell 653
 Sitz Rainmaker 6536
 Apexette Chloe 2050



BW	205 WT	WR	YR	Scrotal	SC	EPDs
91	697	105	91	34	-.08	CED 5
						BW 1.3
						WW 49
						YW 78
						MILK 29

Calving Ease Score: 1 Front Foot Score: 4.5
 Disposition Score: 4.5 Hind Foot Score: 4.5

- A medium framed low input bull with a nice profile and excellent feet. This is your guy if you want females that will stand the test of time.
- Donor dam has 8 ET sons selling.
- Donor granddam.

68 SHIPWHEEL DREAMER 2527
 Reg: 20593621 • Calved: 04/14/22

S A V Renown 3439 #
Shipwheel Dreamer 8522
 WMR Pride 03

Rito 707 of Ideal 3407 7075
 S A V Blackcap May 4136
 WMR Timeless 458 #
 WMR Pride 857

Bruin Torque 5261
Shipwheel Gloria 9101
 Shipwheel Gloria 322 #

S A V 004 Density 4336 #
 Falcon Blackbird 6071
 Connealy Packer 547 #
 S Gloria 209 #



BW	205 WT	WR	YR	Scrotal	SC	EPDs
90	690	106	101	37	1.14	CED 0
						BW 3.4
						WW 71
						YW 123
						MILK 16

Calving Ease Score: 1 Front Foot Score: 4
 Disposition Score: 5 Hind Foot Score: 4.5

- An extremely gentle Dreamer son with a tremendous maternal three generation pedigree.
- His sons will push the scale down and daughters will be the keeper kind.
- Dam is an excellent uddered, small teated, easy fleshing young cow.
- Pathfinder donor has 12 ET sons selling.





SHIPWHEEL RAINMAKER 2677

Reg: +20601844 • Calved: 04/20/22

Basin Rainmaker 2704
Basin Rainmaker 4404
 Basin Joy 1036

Basin Rainmaker P175 #
 Basin Erica 7520 BV #
 Basin Payweight 107S #
 Basin Joy 566T
 Feltons Meat Packer 62 #
 Bestrelle of Conanga 539
 Leachman Right Time #
 S Gloria 0118



EPDs	
CED	3
BW	2.5
WW	61
YW	104
MILK	27
SC	1.09
MB	.47
RE	.66
FAT	.034
Claw	.40
Angle	.46

BW	205 WT	WR	YR	Scrotal	SC
79	595	100	100	35	
Dam BR	Dam WR	Dam YR	MGD BR	MGD WR	MGD YR
6/110	6/107	6/104	9/99	9/103	8/101

Calving Ease Score: 1 Front Foot Score: 4
 Disposition Score: 4.5 Hind Foot Score: 4

- A good, long-sided, well balanced, functional bull.
- Full ET brother to lots 53, 80, 100.



SHIPWHEEL CONCHO 2573

Reg: 20644641 • Calved: 06/29/22



Vermilion Spur E870
JVC Concho 28
 JVC Henrietta Pride 333

Connealy Spur #
 Vermilion Lass 4942
 C C A Uno 049 #
 JVC Henrietta Pride Y137
 Rito 707 of Ideal 3407 7075
 S A V Blackcap May 4136
 Connealy Packer 547 #
 S Gloria 209 #

EPDs	
CED	4
BW	2.8
WW	70
YW	121
MILK	16

BW	205 WT	WR	YR	Scrotal	SC
88	801	121	111	32	.49
Dam BR	Dam WR	Dam YR	MGD BR	MGD WR	MGD YR
3/111	3/112	3/109	6/110	6/107	6/104

Calving Ease Score: 1 Front Foot Score: 4.5
 Disposition Score: 4 Hind Foot Score: 4.5

- Use this bull to inject muscle, performance and incredible feet.
- Dam is a broody, easy fleshing, attractive, excellent uddered cow with "A" ratings across the board.
- Pathfinder donor granddam has 12 ET sons selling.



SHIPWHEEL COALITION 2567

Reg: 20601763 • Calved: 03/31/22



HF Syndicate 213Z
U-2 Coalition 206C #
 U2 Erelite 109Z

Connealy Consensus 7229 #
 HF Miss Blackcap 27R
 Young Dale Xclusive 25X
 U-2 Erelite 1X
 Basin Rainmaker 2704
 Basin Joy 1036
 Sitz Far & Wide 6908
 Apex Eriskay 600

EPDs	
CED	14
BW	-1.7
WW	43
YW	88
MILK	29

BW	205 WT	WR	YR	Scrotal	SC
62	627	96	99	36	.67
Dam BR	Dam WR	Dam YR	MGD BR	MGD WR	MGD YR
1/81	1/96	1/99	7/92	7/94	5/99

Calving Ease Score: 3 Front Foot Score: 4
 Disposition Score: 4 Hind Foot Score: 4

- High genomic rankings for calving ease and foot structure in this good high marbling bull.
- First calf heifer dam has "A" ratings across the board. She bred back first cycle A.I. with a 68 lb. Essential bull calf.



SHIPWHEEL COALITION 2659

Reg: +20601834 • Calved: 05/03/22



HF Syndicate 213Z
U-2 Coalition 206C #
 U2 Erelite 109Z

Connealy Consensus 7229 #
 HF Miss Blackcap 27R
 Young Dale Xclusive 25X
 U-2 Erelite 1X
 S Alliance 3313
 S Gloria 464 #
 Master Guru 0641
 DR J Miss Trav 722 B17

EPDs	
CED	2
BW	3.6
WW	61
YW	105
MILK	16

BW	205 WT	WR	YR	Scrotal	SC
94	671	109	99	35	.60
Dam BR	Dam WR	Dam YR	MGD BR	MGD WR	MGD YR
8/98	8/100	7/100	12/97	12/98	7/100

Calving Ease Score: 1 Front Foot Score: 4.5
 Disposition Score: 4.5 Hind Foot Score: 4.5

- Good gentle, long spined bull with excellent feet.
- Full ET brother to lots 42, 52, 97, 98.





SHIPWHEEL IDEAL 3614 2607

Reg: 20644650 • Calved: 05/17/22



Ideal 9524 of 5570 6809 #
Ideal 3614 of 9524 Blckbrd
Ideal 1721 of 6051 Blackbird

Ideal 5570 of 0452 0534
Ideal 6809 of 2P88 0459 #
Ideal 6051 of 332 2636 #
Ideal 7201 of 2215 0511

Shipwheel Montana 2600
Shipwheel Chloe 6120
Shipwheel Chloe 970

S Chisum 6175 #
Dr J Ms Wide Track 374 M15
Sitz Rainmaker 6536
Apexette Chloe 2050

EPDs	
CED	1
BW	2.3
WW	51
YW	102
MILK	26
SC	1.47
MB	.30
RE	.51
FAT	.016
Claw	.50
Angle	.60

BW	205 WT	WR	YR	Scrotal	
88	641	97	102	37	
Dam BR	Dam WR	Dam YR	MGD BR	MGD WR	MGD YR
5/112	5/100	4/101	9/106	9/105	9/105

Calving Ease Score: 1 Front Foot Score: 4.25
Disposition Score: 4 Hind Foot Score: 4.25

- A good functional bull here sired by 3-614 that bred cows for us in both herds until he was 10 yrs. old.
- Dam is a good uddered, easy fleshing, consistent producer.
- Donor granddam.



Ideal 3614 of 9524 Blckbrd - Sire of Lot 74



SHIPWHEEL COALITION 2536

Reg: 20601724 • Calved: 03/26/22



HF Syndicate 213Z
U-2 Coalition 206C #
U2 Erelite 109Z

Connealy Consensus 7229 #
HF Miss Blackcap 27R
Young Dale Xclusive 25X
U-2 Erelite 1X

Pyramid Strategy 4086
Shipwheel Blackwood 012
Shipwheel Blackwood 754 #

S A V Resource 1441 #
Glacial 20N BlackbirdEve 29R
Myers Keystone M263
Shipwheel Blackwood 182

EPDs	
CED	3
BW	3.5
WW	64
YW	113
MILK	22
SC	1.08
MB	.77
RE	.88
FAT	-.029
Claw	.23
Angle	.33

BW	205 WT	WR	YR	Scrotal	
76	649	100	100	36	
Dam BR	Dam WR	Dam YR	MGD BR	MGD WR	MGD YR
1/98	1/100	1/100	4/113	4/108	4/103

Calving Ease Score: 1 Front Foot Score: 4
Disposition Score: 4 Hind Foot Score: 4

- Top 1% for feet rankings along with growth and carcass.
- First calf heifer dam is feminine with nice udder.
- Pathfinder granddam.



SHIPWHEEL RAINMAKER 2531

Reg: 20601801 • Calved: 04/07/22



Basin Rainmaker 2704
Basin Rainmaker 4404
Basin Joy 1036

Basin Rainmaker P175 #
Basin Erica 7520 BV #
Basin Payweight 107S #
Basin Joy 566T

Pyramid Strategy 4086
Shipwheel Eriskay 9124
Shipwheel Eriskay 003

S A V Resource 1441 #
Glacial 20N BlackbirdEve 29R
H A R B Windy 702 JH #
Shipwheel Eriskay 844

EPDs	
CED	-1
BW	1.8
WW	56
YW	104
MILK	29
SC	.51
MB	.40
RE	.36
FAT	.019
Claw	.37
Angle	.36

BW	205 WT	WR	YR	Scrotal	
88	638	98	103	38	
Dam BR	Dam WR	Dam YR	MGD BR	MGD WR	MGD YR
2/103	2/95	1/103	10/100	10/97	8/100

Calving Ease Score: 1 Front Foot Score: 4
Disposition Score: 4 Hind Foot Score: 4.5

- A long-bodied bull that excels in growth and maternal.
- Young dam has "A" ratings in every category at calving.



SHIPWHEEL RAINMAKER 2566

Reg: 20601761 • Calved: 04/06/22



Basin Rainmaker 2704
Basin Rainmaker 4404
Basin Joy 1036

Basin Rainmaker P175 #
Basin Erica 7520 BV #
Basin Payweight 107S #
Basin Joy 566T

S A V Resource 1441 #
Shipwheel Pride 0130
WMR Pride 03

Rito 707 of Ideal 3407 7075
S A V Blackcap May 4136
WMR Timeless 458 #
WMR Pride 857

EPDs	
CED	-1
BW	3.8
WW	62
YW	111
MILK	30
SC	-.12
MB	-.03
RE	.45
FAT	.047
Claw	.42
Angle	.57

BW	205 WT	WR	YR	Scrotal	
88	656	101	105	33	
Dam BR	Dam WR	Dam YR	MGD BR	MGD WR	MGD YR
1/112	1/101	1/105	8/101	8/109	8/107

Calving Ease Score: 1 Front Foot Score: 4.25
Disposition Score: 4 Hind Foot Score: 4

- A long bodied, functional Rainmaker x Resource.
- First calf heifer dam is easy fleshing with a nice udder.
- Donor granddam Pride 03.

78 SHIPWHEEL DREAMER 2630

Reg: 20593552 • Calved: 04/28/22



S A V Renown 3439 #
Shipwheel Dreamer 8522
WMR Pride 03

Rito 707 of Ideal 3407 7075
S A V Blackcap May 4136
WMR Timeless 458 #
WMR Pride 857

Connealy Packer 547 #
Shipwheel Lady 314
Shipwheel Lady 1116

Feltons Meat Packer 62 #
Bestrelle of Conanga 539
Sitz Upward 307R #
DR J Ms Danny Boy M63

EPDs	
CED	3
BW	2.1
WW	65
YW	109
MILK	31

BW	205 WT	WR	YR	Scrotal	SC	
86	701	106	103	38.5	1.21	
Dam BR	Dam WR	Dam YR	MGD BR	MGD WR	MGD YR	RE
8/91	8/102	8/98	4/89	4/103	4/102	.84
					FAT	.025
					Claw	.37
					Angle	.37

- Calving Ease Score: 1 Front Foot Score: 4.25
Disposition Score: 3.75 Hind Foot Score: 4
- An athletic, heads-up bull with a tremendous maternal lineage.
 - Dam is a 10 yr. old cow and still in production.
 - 3rd dam was the last original DR J cow we had that produced until she was 16 yrs. old.

81 SHIPWHEEL EXECUTIVE LAW 2649

Reg: +20601828 • Calved: 04/24/22



PM Executive Decision 5'17
W Sunrise Executive Law 507H
HF Tibbie 27D

Bar-E-L Natural Law 52Y
PM Blossom 124'13
HF Syndicate 213Z
HF Tibbie 162B

Connealy Packer 547 #
Shipwheel Gloria 322 #
S Gloria 209 #

Feltons Meat Packer 62 #
Bestrelle of Conanga 539
Leachman Right Time #
S Gloria 0118

EPDs	
CED	6
BW	1.1
WW	52
YW	95
MILK	26

BW	205 WT	WR	YR	Scrotal	SC	
88	642	100	100	38	1.72	
Dam BR	Dam WR	Dam YR	MGD BR	MGD WR	MGD YR	RE
6/110	6/107	6/104	9/99	9/103	8/101	.70
					FAT	.002
					Claw	.47
					Angle	.38

- Calving Ease Score: 2 Front Foot Score: 4
Disposition Score: 4 Hind Foot Score: 4
- Full ET brother to lots 29, 39, 55, 83, 84, 85, 106.

79 SHIPWHEEL DREAMER 2625

Reg: 20593566 • Calved: 04/23/22



S A V Renown 3439 #
Shipwheel Dreamer 8522
WMR Pride 03

Rito 707 of Ideal 3407 7075
S A V Blackcap May 4136
WMR Timeless 458 #
WMR Pride 857

Sitz Far & Wide 6908
Shipwheel Chloe 4106
Shipwheel Chloe 001

Sitz Upward 307R #
Sitz Barabaramere Nell 653
H A R B Windy 702 JH #
Shipwheel Chloe 802

EPDs	
CED	3
BW	2.1
WW	51
YW	93
MILK	27

BW	205 WT	WR	YR	Scrotal	SC	
92	701	106	103	40	1.69	
Dam BR	Dam WR	Dam YR	MGD BR	MGD WR	MGD YR	RE
6/105	6/105	6/103	7/106	7/101	6/99	.69
					FAT	.027
					Claw	.52
					Angle	.47

- Calving Ease Score: 1 Front Foot Score: 4
Disposition Score: 4 Hind Foot Score: 4
- A bull similar to lot 78.
 - Dam is an attractive, excellent uddered 9 yr. old cow that has been a stellar producer.

82 SHIPWHEEL ESSENTIAL 2500

Reg: 20593587 • Calved: 04/11/22



Shipwheel Resource 5621
Shipwheel Essential 9536
Shipwheel Pinetop 720 #

S A V Resource 1441 #
Apex Eriskay 5506 #
LT Regions 4110
Shipwheel Pinetop 572

Musgrave Sky High 1535
Shipwheel Pride 801
WMR Pride 03

Musgrave Big Sky #
Flag Queen W 00649
WMR Timeless 458 #
WMR Pride 857

EPDs	
CED	7
BW	.6
WW	63
YW	112
MILK	33

BW	205 WT	WR	YR	Scrotal	SC	
85	674	104	107	35	.61	
Dam BR	Dam WR	Dam YR	MGD BR	MGD WR	MGD YR	RE
3/95	3/101	3/105	8/101	8/109	8/107	.44
					FAT	.008
					Claw	.36
					Angle	.44

- Calving Ease Score: 2 Front Foot Score: 4
Disposition Score: 4.5 Hind Foot Score: 4.5
- A good calving ease bull with a little more frame. He will sire extra performance with maternal to boot.
 - Dam is a bigger, broody, gentle cow with a really nice udder.
 - Donor granddam is Pride 03.

80 SHIPWHEEL RAINMAKER 2676

Reg: +20601859 • Calved: 04/18/22



Basin Rainmaker 2704
Basin Rainmaker 4404
Basin Joy 1036

Basin Rainmaker P175 #
Basin Erica 7520 BV #
Basin Payweight 107S #
Basin Joy 566T

Connealy Packer 547 #
Shipwheel Gloria 322 #
S Gloria 209 #

Feltons Meat Packer 62 #
Bestrelle of Conanga 539
Leachman Right Time #
S Gloria 0118

EPDs	
CED	7
BW	2.1
WW	68
YW	126
MILK	32

BW	205 WT	WR	YR	Scrotal	SC	
70	606	100	100	36	1.26	
Dam BR	Dam WR	Dam YR	MGD BR	MGD WR	MGD YR	RE
6/110	6/107	6/104	9/99	9/103	8/101	.43
					FAT	.044
					Claw	.38
					Angle	.40

- Calving Ease Score: 2 Front Foot Score: 4.25
Disposition Score: 4.25 Hind Foot Score: 4.5
- A little bigger bull with good extension. Good rankings for growth, feet, maternal and carcass. Complete bull.
 - Full ET brother to lots 53, 72, 100.



Thanks R W Hay Grinding

LOTS 83, 84 & 85 FLUSH BROTHERS



SHIPWHEEL EXECUTIVE LAW 2653

Reg: +20601809 • Calved: 04/27/22



PM Executive Decision 5'17
W Sunrise Executive Law 507H
HF Tibbie 27D

Bar-E-L Natural Law 52Y
PM Blossom 124'13
HF Syndicate 213Z
HF Tibbie 162B

EPDs	
CED	0
BW	4.1
WW	68
YW	116
MILK	24
SC	1.07
MB	.64
RE	.81
FAT	-.001
Claw	.46
Angle	.39

Connealy Packer 547 #
Shipwheel Gloria 322 #
S Gloria 209 #

Feltons Meat Packer 62 #
Bestrelle of Conanga 539
Leachman Right Time #
S Gloria 0118

BW	205 WT	WR	YR	Scrotal	SC
110	709	100	100	36	1.07
Dam BR	Dam WR	Dam YR	MGD BR	MGD WR	MGD YR
6/110	6/107	6/104	9/99	9/103	8/101

Calving Ease Score: 1 Front Foot Score: 4
Disposition Score: 4 Hind Foot Score: 4

• A good, long bodied dense made bull that excels in growth, carcass and maternal traits.

• Full ET brother to lots 29, 39, 55, 81, 84, 85, 106.



SHIPWHEEL EXECUTIVE LAW 2650

Reg: +20601832 • Calved: 04/26/22



PM Executive Decision 5'17
W Sunrise Executive Law 507H
HF Tibbie 27D

Bar-E-L Natural Law 52Y
PM Blossom 124'13
HF Syndicate 213Z
HF Tibbie 162B

EPDs	
CED	-1
BW	3.7
WW	65
YW	118
MILK	31
SC	1.38
MB	.63
RE	.94
FAT	-.015
Claw	.50
Angle	.46

Connealy Packer 547 #
Shipwheel Gloria 322 #
S Gloria 209 #

Feltons Meat Packer 62 #
Bestrelle of Conanga 539
Leachman Right Time #
S Gloria 0118

BW	205 WT	WR	YR	Scrotal	SC
88	696	100	100	36	1.38
Dam BR	Dam WR	Dam YR	MGD BR	MGD WR	MGD YR
6/110	6/107	6/104	9/99	9/103	8/101

Calving Ease Score: 1 Front Foot Score: 2.5
Disposition Score: 4 Hind Foot Score: 3.5

• Excellent rankings for growth, maternal and carcass. And keeps \$EN in check. Very well-rounded bull.

• Full ET brothers to lots 29, 39, 55, 81, 83, 84, 106.



SHIPWHEEL EXECUTIVE LAW 2651

Reg: +20601837 • Calved: 05/01/22



PM Executive Decision 5'17
W Sunrise Executive Law 507H
HF Tibbie 27D

Bar-E-L Natural Law 52Y
PM Blossom 124'13
HF Syndicate 213Z
HF Tibbie 162B

EPDs	
CED	1
BW	2.1
WW	57
YW	102
MILK	28
SC	1.1
MB	.28
RE	.67
FAT	.007
Claw	.39
Angle	.52

Connealy Packer 547 #
Shipwheel Gloria 322 #
S Gloria 209 #

Feltons Meat Packer 62 #
Bestrelle of Conanga 539
Leachman Right Time #
S Gloria 0118

BW	205 WT	WR	YR	Scrotal	SC
97	687	100	100	38	1.1
Dam BR	Dam WR	Dam YR	MGD BR	MGD WR	MGD YR
6/110	6/107	6/104	9/99	9/103	8/101

Calving Ease Score: 1 Front Foot Score: 4
Disposition Score: 4 Hind Foot Score: 4

• Full ET brother to lots 29, 39, 55, 81, 83, 84, 106.



SHIPWHEEL CAPITALIST 2505

Reg: 20593593 • Calved: 04/16/22



LD Capitalist 316 #
Braun Creek Capitalist 938
Braun Creek Merle 718

Connealy Capitalist 028 #
LD Dixie Erica 2053
Shipwheel Far & Wide 1558
Braun Creek Merle 556
S A V 004 Density 4336 #
Falcon Blackbird 6071
S Chisum 255 #
Shipwheel Verona 221 #

EPDs	
CED	1
BW	1.9
WW	70
YW	121
MILK	16
SC	.55
MB	.61
RE	.66
FAT	.037
Claw	.40
Angle	.43

Bruin Torque 5261
Shipwheel Verona 856
Shipwheel Verona 444 #

BW	205 WT	WR	YR	Scrotal	SC
87	690	106	108	34	.55
Dam BR	Dam WR	Dam YR	MGD BR	MGD WR	MGD YR
3/96	3/102	2/102	7/87	7/109	6/105

Calving Ease Score: 1 Front Foot Score: 4
Disposition Score: 4 Hind Foot Score: 4

- Performance, carcass and maternal bred into this guy.
- Dam is medium framed, easy fleshing and excellent uddered.
- Pathfinder granddam has been a tremendous producer.
- Pathfinder 3rd dam.



SHIPWHEEL COALITION 2542

Reg: 20644639 • Calved: 04/24/22



U-2 Coalition 206C #
Shipwheel Coalition 0504
Shipwheel Pinetop 753 #

HF Syndicate 213Z
U2 Erelite 109Z
LT Regions 4110
Shipwheel Pinetop 562
S A V Resource 1441 #
Apex Eriskay 5506 #
Bruin Torque 5261
Shipwheel Pinetop 002

EPDs	
CED	10
BW	1.1
WW	56
YW	113
MILK	33
SC	.42
MB	.37
RE	.47
FAT	.012
Claw	.41
Angle	.54

Shipwheel Resource 5621
Shipwheel Pinetop 052
Shipwheel Pinetop 8131

BW	205 WT	WR	YR	Scrotal	SC
86	606	93	104	33	.42
Dam BR	Dam WR	Dam YR	MGD BR	MGD WR	MGD YR
1/108	1/93	1/104	2/95	2/100	2/96

Calving Ease Score: 2 Front Foot Score: 4
Disposition Score: 4 Hind Foot Score: 4

- A dandy, well balanced, calving ease bull here, backed by tremendous maternal.
- First calf heifer dam has high rankings across the board.



SHIPWHEEL PACKER 2586

Reg: 20593586 • Calved: 04/24/22



Connealy Packer 547 #
Shipwheel Packer 4514
Apexette Crissy 4425

Feltons Meat Packer 62 #
Bestrelle of Conanga 539
Connealy Forefront #
H C Miss Crissy 501
S Chisum 6175 #
S Blossom 0278 #
S A V Resource 1441 #
Dr J Ms Wide Track 374 M15

EPDs	
CED	8
BW	1.0
WW	56
YW	91
MILK	13
SC	.23
MB	.44
RE	.29
FAT	-.003
Claw	.62
Angle	.60

S Chisum 255 #
Shipwheel Pinetop 759
Shipwheel Pinetop 5113

BW	205 WT	WR	YR	Scrotal	SC
83	650	98	109	38	.23
Dam BR	Dam WR	Dam YR	MGD BR	MGD WR	MGD YR
4/101	4/93	2/102	2/104	2/107	2/106

Calving Ease Score: 1 Front Foot Score: 4
Disposition Score: 3.5 Hind Foot Score: 4

- An athletic, rugged built bull that will hold up in rough country.
- Dam is a pretty, easy keeping cow with a little more frame.
- Donor 3rd dam is the mother to Shipwheel Montana.

89 SHIPWHEEL TITANIUM 2574

Reg: 20644642 • Calved: 04/20/22



Mc Cumber Titanium 5005
MVCC 5005-925
MVCC Molly 424

Mc Cumber Titanium 3127
Miss Wix 7126 of Mc Cumber #
Vermilion 7078 Dateline L189
Sackmann Molly 076

Coleman Knight 209
Shipwheel Pride 823
WMR Pride 03

R R Rito 707 #
Coleman Donna 714
WMR Timeless 458 #
WMR Pride 857

EPDs	
CED	11
BW	-.1
WW	51
YW	86
MILK	31

BW	205 WT	WR	YR	Scrotal	SC	
65	603	91	98	35.5	.58	
Dam BR	Dam WR	Dam YR	MGD BR	MGD WR	MGD YR	RE
3/93	3/98	3/100	8/101	8/109	8/107	.24
						FAT
						.035
						Claw
						.31
						Angle
						.30

Calving Ease Score: 2 Front Foot Score: 4.5
Disposition Score: 4.5 Hind Foot Score: 4.5

- A bull that we like really well. He's easy going, excellent footed, easy fleshing and backed by a tremendous cow family.
- Dam is a gentle, medium framed, easy fleshing young cow with a nice udder.
- Donor granddam is Pride 03.

90 SHIPWHEEL DREAMER 2608

Reg: 20593581 • Calved: 04/27/22



S A V Renown 3439 #
Shipwheel Dreamer 8522
WMR Pride 03

Rito 707 of Ideal 3407 7075
S A V Blackcap May 4136
WMR Timeless 458 #
WMR Pride 857

Connealy Thunder #
Shipwheel Enchantress 6130
Shipwheel Enchantress 8184

Baldrige Kaboom K243 KCF #
Parka of Conanga 241 #
Holman 208 P44
Dr J Ms Apex 053 L35

EPDs	
CED	6
BW	1.4
WW	51
YW	91
MILK	29

BW	205 WT	WR	YR	Scrotal	SC	
86	642	97	92	38	.82	
Dam BR	Dam WR	Dam YR	MGD BR	MGD WR	MGD YR	RE
5/96	5/99	5/97	8/93	8/107	6/106	.91
						FAT
						.030
						Claw
						.39
						Angle
						.38

Calving Ease Score: 1 Front Foot Score: 4.5
Disposition Score: 4 Hind Foot Score: 4.5

- An athletic, excellent footed bull that is active in the pen. He will cover the cows. Powerful pedigree.
- Dam is one of the prettiest cows we own.
- Long, wedge shaped, super deep and easy fleshing with an excellent udder.
- Donor granddam.

91 SHIPWHEEL CONCHO 2511

Reg: 20593602 • Calved: 04/14/22



Vermilion Spur E870
JVC Concho 28
JVC Henrietta Pride 333

Connealy Spur #
Vermilion Lass 4942
C C A Uno 049 #
JVC Henrietta Pride Y137

S Chisum 255 #
Shipwheel Pinetop 914
D R J Miss Rolls Royce F17 #

S Chisum 6175 #
S Blossom 0278 #
B H Rolls Royce 944
DR J Miss N Bar 17

EPDs	
CED	-9
BW	7.3
WW	70
YW	119
MILK	23

BW	205 WT	WR	YR	Scrotal	SC	
97	666	102	102	37	.94	
Dam BR	Dam WR	Dam YR	MGD BR	MGD WR	MGD YR	RE
2/99	2/107	2/103	12/102	12/106	10/104	.59
						FAT
						-.024
						Claw
						.41
						Angle
						.40

Calving Ease Score: 1 Front Foot Score: 4
Disposition Score: 4 Hind Foot Score: 4

- Use this bull to incorporate growth and performance with added length.
- Young dam is feminine, gentle and excellent uddered. She is well on her way to Pathfinder.
- Pathfinder donor granddam raised 12 calves @ 106 WR.
- 3rd dam raised 11 calves @ 102 WR.

92 SHIPWHEEL REAL DEAL 2631

Reg: 20601765 • Calved: 05/01/22



Duff-JC 4Real 16250
Duff Real Deal 19115
Duff Queen 0570 3570

Duff Napoleon 232
Duff Amigo 927K Juanada 071
SA Ranch Hand 8185 075
Duff Queen Mother 5146 0570

S John Wayne
Shipwheel Pinetop 365
DR J Miss Guru I6

S Chisum 6175 #
S Beaufort 3145
Master Guru 0641
DR J Miss Trav 722 B17

EPDs	
CED	0
BW	3.8
WW	47
YW	76
MILK	15

BW	205 WT	WR	YR	Scrotal	SC	
102	640	96	91	37	-.42	
Dam BR	Dam WR	Dam YR	MGD BR	MGD WR	MGD YR	RE
8/107	8/97	6/100	12/97	12/98	7/100	.31
						FAT
						.012
						Claw
						.34
						Angle
						.26

Calving Ease Score: 1 Front Foot Score: 4.5
Disposition Score: 4 Hind Foot Score: 4.5

- An excellent footed bull with a powerful maternal lineage.
- Dam is a 10 yr. old consistent producing cow. She is the maternal granddam to Shipwheel Confederate.
- Donor granddam. • 3rd dam raised 12 calves @ 107 WR.
- 4th dam raised 11 calves @ 102 WR.

93 SHIPWHEEL DR J 2591

Reg: 20644646 • Calved: 05/19/22



Shipwheel Dr J In Focus 9560
BPF DR J 2110
BPF Forever Lady 651

Dr J Apex Focus 053-M89
Apexette Crissy 4425
B/R New Frontier 095 #
Gdar SVF Forever Lady 226D

Myers Keystone M263
Shipwheel Blackwood 754 #
Shipwheel Blackwood 182

Connealy Capitalist 028 #
Myers Queen M180
Shipwheel Chinook #
Shipwheel Blackwood 949

EPDs	
CED	8
BW	4.3
WW	75
YW	122
MILK	12

BW	205 WT	WR	YR	Scrotal	SC	
101	719	108	103	37	.86	
Dam BR	Dam WR	Dam YR	MGD BR	MGD WR	MGD YR	RE
4/113	4/108	4/103	6/96	6/105	6/104	.85
						FAT
						-.036
						Claw
						.27
						Angle
						.41

Calving Ease Score: 1 Front Foot Score: 4
Disposition Score: 4.25 Hind Foot Score: 4.25

- Use this guy to increase disposition, foot quality, performance and carcass quality.
- Pathfinder dam is a bigger, deep ribbed, excellent uddered cow.



Maya & Taggart Blackmore

94 SHIPWHEEL DR J 2618

Reg: 20644651 • Calved: 05/17/22



Shipwheel Dr J In Focus 9560
BPF DR J 2110
BPF Forever Lady 651

Dr J Apex Focus 053-M89
Apexette Crissy 4425
B/R New Frontier 095 #
Gdar SVF Forever Lady 226D
S Chisum 6175 #
Dr J Ms Wide Track 374 M15
Apex 450 Wide Track 052
Apexette Eriskay 9040 #

EPDs	
CED	4
BW	3.9
WW	70
YW	117
MILK	20
SC	.91
MB	.25
RE	.58
FAT	.064
Claw	.56
Angle	.57

BW	205 WT	WR	YR	Scrotal	SC
90	610	92	95	33	.25
Dam BR	Dam WR	Dam YR	MGD BR	MGD WR	MGD YR
5/98	5/93	4/97	7/104	7/100	6/100

Calving Ease Score: 1 Front Foot Score: 4

Disposition Score: 4.25 Hind Foot Score: 4

• A gentle, long bodied, Dr J with high rankings for weaning and yearling growth.

• Dam is an attractive, long bodied cow with a very nice udder.

• A full brother sold to Guy Bradley, MT in 2021.

95 SHIPWHEEL REAL DEAL 2604

Reg: 20601777 • Calved: 04/26/22



Duff-JC 4Real 16250
Duff Real Deal 19115
Duff Queen 0570 3570

Duff Napoleon 232
Duff Amigo 927K Juanada 071
SA Ranch Hand 8185 075
Duff Queen Mother 5146 0570
Rito 707 of Ideal 3407 7075
S A V Blackcap May 4136
Hylene Right Time 338 #
Apexette Eriskay 9040 #

EPDs	
CED	6
BW	1.4
WW	65
YW	108
MILK	10
SC	.15
MB	.11
RE	.63
FAT	.003
Claw	.44
Angle	.32

BW	205 WT	WR	YR	Scrotal	SC
85	650	98	95	37	.11
Dam BR	Dam WR	Dam YR	MGD BR	MGD WR	MGD YR
5/101	5/103	5/101	8/103	8/102	5/103

Calving Ease Score: 2 Front Foot Score: 4

Disposition Score: 4 Hind Foot Score: 4

• A good looking, deep middled functional bull.

• Pathfinder dam is a stunning angus female with a tremendous maternal lineage.

• Donor granddam.

• Pathfinder donor 3rd dam raised calves well up into her teens.

• Donor 4th dam raised 14 calves. • 6th dam Klint's first cow.

96 SHIPWHEEL ESSENTIAL 2687

Reg: 20601778 • Calved: 04/20/22



Shipwheel Resource 5621
Shipwheel Essential 9536
Shipwheel Pinetop 720 #

S A V Resource 1441 #
Apex Eriskay 5506 #
LT Regions 4110
Shipwheel Pinetop 572
Boyd Signature 1014
Shipwheel Black Pride 277
Shipwheel Chinook #
Shipwheel Blackwood 949

EPDs	
CED	14
BW	-1.2
WW	57
YW	103
MILK	26
SC	.99
MB	.25
RE	.51
FAT	.032
Claw	.48
Angle	.43

BW	205 WT	WR	YR	Scrotal	SC
68	601	100	100	37	.25
Dam BR	Dam WR	Dam YR	MGD BR	MGD WR	MGD YR
4/112	4/104	4/103	6/96	6/105	6/104

Calving Ease Score: 3 Front Foot Score: 4

Disposition Score: 4.5 Hind Foot Score: 4

• A super gentle, well balanced, calving ease bull. He's double bred to Eriskay 5506. The mother to Shipwheel Chinook.

• Dam is an excellent footed, nice fronted, thick made cow.

97 SHIPWHEEL COALITION 2670

Reg: +20601811 • Calved: 04/24/22



HF Syndicate 213Z
U-2 Coalition 206C #
U2 Erelite 109Z

Connealy Consensus 7229 #
HF Miss Blackcap 27R
Young Dale Xclusive 25X
U-2 Erelite 1X
S Alliance 3313
S Gloria 464 #
Master Guru 0641
DR J Miss Trav 722 B17

S Chisum 6175 #
Shipwheel Pinetop 251
DR J Miss Guru I6

EPDs	
CED	11
BW	0
WW	45
YW	86
MILK	26
SC	.27
MB	.12
RE	.38
FAT	-.017
Claw	.32
Angle	.40

BW	205 WT	WR	YR	Scrotal	SC
82	648	100	100	35	.12
Dam BR	Dam WR	Dam YR	MGD BR	MGD WR	MGD YR
8/98	8/100	7/100	12/97	12/98	7/100

Calving Ease Score: 3 Front Foot Score: 4.25

Disposition Score: 4.25 Hind Foot Score: 4.25

• Use this calving ease bull to improve foot quality, disposition, length and maternal power.

• Full ET brother to lots 42, 52, 71, 97.

98 SHIPWHEEL COALITION 2657

Reg: +20601838 • Calved: 04/28/22



HF Syndicate 213Z
U-2 Coalition 206C #
U2 Erelite 109Z

Connealy Consensus 7229 #
HF Miss Blackcap 27R
Young Dale Xclusive 25X
U-2 Erelite 1X
S Alliance 3313
S Gloria 464 #
Master Guru 0641
DR J Miss Trav 722 B17

S Chisum 6175 #
Shipwheel Pinetop 251
DR J Miss Guru I6

EPDs	
CED	14
BW	-1.5
WW	48
YW	91
MILK	16
SC	.98
MB	.70
RE	.27
FAT	.007
Claw	.37
Angle	.43

BW	205 WT	WR	YR	Scrotal	SC
66	537	87	99	38	.70
Dam BR	Dam WR	Dam YR	MGD BR	MGD WR	MGD YR
8/98	8/100	7/100	12/97	12/98	7/100

Calving Ease Score: 3 Front Foot Score: 4

Disposition Score: 4 Hind Foot Score: 4

• Very similar to lot 97. Buy them both for consistency.

• Full ET brother to lots 42, 52, 71, 97.



Shipwheel Pinetop 251 - Dam of Lots 97 & 98

99 SHIPWHEEL COALITION 2539

Reg: 20601732 • Calved: 03/25/22



HF Syndicate 213Z
U-2 Coalition 206C #
U2 Erelite 109Z

Connealy Consensus 7229 #
HF Miss Blackcap 27R
Young Dale Xclusive 25X
U-2 Erelite 1X

Shipwheel Eisenhower 8625
Shipwheel Pinetop 034
Shipwheel Pinetop 849

K A Eisenhower
Shipwheel Primrose 686
Shipwheel Motive 6508
Shipwheel Pinetop 610

EPDs	
CED	12
BW	-.3
WW	59
YW	97
MILK	30

BW	205 WT	WR	YR	Scrotal	SC
69	691	106	101	37	1.15
Dam BR	Dam WR	Dam YR	MGD BR	MGD WR	MGD YR
1/90	1/106	1/101	1/91	1/103	1/98

MB	.52
RE	.49
FAT	-.001
Claw	.29
Angle	.38

Calving Ease Score: 3 Front Foot Score: 4.5
Disposition Score: 4.5 Hind Foot Score: 4.5

- A good, moderate framed calving ease bull with a nice disposition and excellent feet.
- First calf heifer dam has "A" ratings across the board. She bred back first cycle A.I. with a 76 lb. Rainmaker 0538 heifer calf.

100 SHIPWHEEL RAINMAKER 2680

Reg: +20601826 • Calved: 04/27/22



Basin Rainmaker 2704
Basin Rainmaker 4404
Basin Joy 1036

Basin Rainmaker P175 #
Basin Erica 7520 BV #
Basin Payweight 107S #
Basin Joy 566T

Connealy Packer 547 #
Shipwheel Gloria 322 #
S Gloria 209 #

Feltons Meat Packer 62 #
Bestrelle of Conanga 539
Leachman Right Time #
S Gloria 0118

EPDs	
CED	7
BW	.3
WW	58
YW	97
MILK	26

BW	205 WT	WR	YR	Scrotal	SC
94	627	100	100	36	.87
Dam BR	Dam WR	Dam YR	MGD BR	MGD WR	MGD YR
6/110	6/107	6/104	9/99	9/103	8/101

MB	.88
RE	.31
FAT	.042
Claw	.52
Angle	.47

Calving Ease Score: 2 Front Foot Score: 4.25
Disposition Score: 4.25 Hind Foot Score: 4

- Use this calving ease bull to increase maternal and marbling.
- Full ET brother to lots 53, 72, 80.

101 SHIPWHEEL COALITION 2549

Reg: 20601746 • Calved: 04/04/22



HF Syndicate 213Z
U-2 Coalition 206C #
U2 Erelite 109Z

Connealy Consensus 7229 #
HF Miss Blackcap 27R
Young Dale Xclusive 25X
U-2 Erelite 1X

LD Capitalist 316 #
Shipwheel Eriskay 092
Shipwheel Eriskay 254

Connealy Capitalist 028 #
LD Dixie Erica 2053
Sitz Upward 307R #
Shipwheel Eriskay 821

EPDs	
CED	10
BW	.6
WW	60
YW	112
MILK	32

BW	205 WT	WR	YR	Scrotal	SC
66	610	94	100	35	.23
Dam BR	Dam WR	Dam YR	MGD BR	MGD WR	MGD YR
1/86	1/94	1/100	7/93	7/97	5/99

MB	.65
RE	.37
FAT	-.011
Claw	.40
Angle	.44

Calving Ease Score: 3 Front Foot Score: 4
Disposition Score: 4 Hind Foot Score: 4.5

- A well rounded, calving ease bull with high rankings across the genomic profile.
- First calf heifer dam bred back first cycle A.I. with an 87 lb. Rainmaker 0538 heifer calf.

102 SHIPWHEEL RAINMAKER 2538

Reg: 20601726 • Calved: 03/30/22



Basin Rainmaker 2704
Basin Rainmaker 4404
Basin Joy 1036

Basin Rainmaker P175 #
Basin Erica 7520 BV #
Basin Payweight 107S #
Basin Joy 566T

U-2 Coalition 206C #
Shipwheel Pride 020
Shipwheel Pride 802 #

HF Syndicate 213Z
U2 Erelite 109Z
Coleman Knight 209
WMR Pride 03

EPDs	
CED	18
BW	-2.4
WW	50
YW	88
MILK	34

BW	205 WT	WR	YR	Scrotal	SC
67	664	102	97	37	.90
Dam BR	Dam WR	Dam YR	MGD BR	MGD WR	MGD YR
1/87	1/102	1/97	3/100	3/107	3/105

MB	.16
RE	.12
FAT	-.015
Claw	.36
Angle	.29

Calving Ease Score: 3 Front Foot Score: 4.25
Disposition Score: 4.25 Hind Foot Score: 4.5

- A sleep all night heifer bull with a balanced EPD profile. Longevity oriented cow family here. His daughters should be outstanding.
- First calf heifer dam bred back first cycle A.I. with an 80 lb. Essential bull calf.



Thank you
B Diamond Cattle Services



103 SHIPWHEEL ESSENTIAL 2674

Reg: +20601823 • Calved: 04/28/22



Shipwheel Resource 5621
Shipwheel Essential 9536
 Shipwheel Pinetop 720 #

S A V Resource 1441 #
 Apex Eriskay 5506 #
 LT Regions 4110
 Shipwheel Pinetop 572
 Sitz Upward 307R #
 Sitz Barbaramere Nell 653
 Sitz Rainmaker 6536
 Apexette Chloe 2050

EPDs	
CED	8
BW	.1
WW	43
YW	79
MILK	30

BW	205 WT	WR	YR	Scrotal	SC	
88	590	96	94	34	.53	
Dam BR	Dam WR	Dam YR	MGD BR	MGD WR	MGD YR	RE
6/104	6/103	6/102	9/106	9/105	9/105	.66
						FAT
						.012
						Claw
						.34
						Angle
						.38

Calving Ease Score: 2 Front Foot Score: 4.5
 Disposition Score: 3.75 Hind Foot Score: 4.5

- A moderate framed, calving ease bull with excellent feet and powerful maternal.
- Full ET brother to lots 12, 41, 64, 65.

105 SHIPWHEEL COALITION 2559

Reg: 20601750 • Calved: 04/04/22



HF Syndicate 213Z
U-2 Coalition 206C #
 U2 Erelite 109Z

Connealy Consensus 7229 #
 HF Miss Blackcap 27R
 Young Dale Xclusive 25X
 U-2 Erelite 1X
 Connealy Capitalist 028 #
 LD Dixie Erica 2053
 S A V Resource 1441 #
 DR J Miss Guru I60

LD Capitalist 316 #
Shipwheel Georgina 0112
 Shipwheel Georgina 5141

EPDs	
CED	8
BW	.6
WW	62
YW	112
MILK	26

BW	205 WT	WR	YR	Scrotal	SC	
71	639	98	100	38	.82	
Dam BR	Dam WR	Dam YR	MGD BR	MGD WR	MGD YR	RE
1/92	1/98	1/100	5/100	5/85	3/94	.83
						FAT
						-.009
						Claw
						.43
						Angle
						.48

Calving Ease Score: 3 Front Foot Score: 4.25
 Disposition Score: 4 Hind Foot Score: 4.25

- A good, gentle, calving ease Coalition.
- First calf heifer dam has "A" ratings across the board. She bred back first cycle A.I. with an 87 lb. Rainmaker 0538 bull calf.

104 SHIPWHEEL COALITION 2561

Reg: 20644640 • Calved: 04/25/22



U-2 Coalition 206C #
Shipwheel Coalition 0661
 Shipwheel Enchantress 6130

HF Syndicate 213Z
 U2 Erelite 109Z
 Connealy Thunder #
 Shipwheel Enchantress 8184
 S A V Resource 1441 #
 Apex Eriskay 5506 #
 Sitz Far & Wide 6908
 Shipwhel Chloe 001

EPDs	
CED	17
BW	-2.5
WW	41
YW	73
MILK	26

BW	205 WT	WR	YR	Scrotal	SC	
70	671	103	95	36	1.24	
Dam BR	Dam WR	Dam YR	MGD BR	MGD WR	MGD YR	RE
1/91	1/103	1/95	6/105	6/105	6/103	.20
						FAT
						.023
						Claw
						.51
						Angle
						.54

Calving Ease Score: 3 Front Foot Score: 4.25
 Disposition Score: 4 Hind Foot Score: 4.25

- A moderate framed, good footed, low birth Coalition, chucked full of maternal.
- First calf heifer dam has "A" ratings for udder, teats, disposition and mothering ability. She bred back first cycle A.I.

106 SHIPWHEEL EXECUTIVE LAW 2648

Reg: +20601841 • Calved: 04/28/22



PM Executive Decision 5'17
W Sunrise Executive Law 507H
 HF Tibbie 27D

Bar-E-L Natural Law 52Y
 PM Blossom 124'13
 HF Syndicate 213Z
 HF Tibbie 162B
 Feltons Meat Packer 62 #
 Bestrelle of Conanga 539
 Leachman Right Time #
 S Gloria 0118

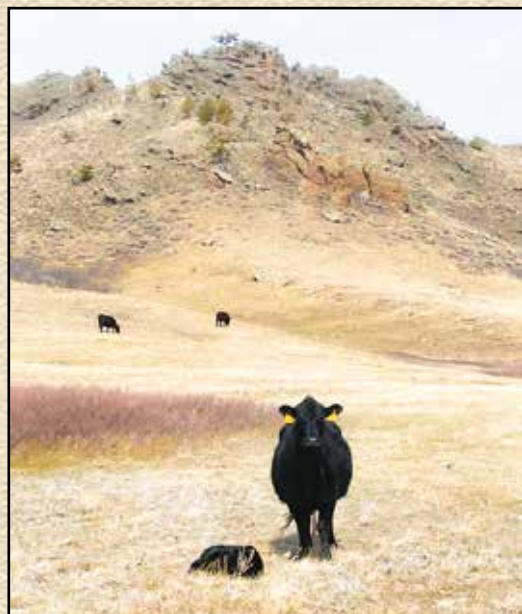
Connealy Packer 547 #
Shipwheel Gloria 322 #
 S Gloria 209 #

EPDs	
CED	3
BW	3.0
WW	56
YW	97
MILK	23

BW	205 WT	WR	YR	Scrotal	SC	
94	607	99	99	36	1.57	
Dam BR	Dam WR	Dam YR	MGD BR	MGD WR	MGD YR	RE
6/110	6/107	6/104	9/99	9/103	8/101	.68
						FAT
						.014
						Claw
						.38
						Angle
						.41

Calving Ease Score: 1 Front Foot Score: 4
 Disposition Score: 4 Hind Foot Score: 4

- Full ET brother to lots 29, 39, 55, 81, 83, 84, 85.



SHIPWHEEL CATTLE COMPANY CARRIED LIVE ON THE INTERNET



**Bid through Northern Livestock Video Auction's NEW Online Bidding Platform!
Desktop and Mobile Friendly**

For the Desktop:

1. It is best to use the Google Chrome web browser.
2. **Pre-Register at least one day prior to the sale.**
3. Go to **bid.northernlivestockvideo.com** and click "Get Approved to Bid".
4. Doing this will prompt you to create an account, after which you will fill out a bidder approval application.
5. Once Approved, an email will be sent to the email account provided, please click the link in that email to activate your account and a buyer number will be provided.
6. On sale day (after approval), visit **www.northernlivestockvideo.com** to view and bid!

For the Mobile:

Use your mobile device to download the Northern App and follow the above steps to get approved.

There is an instructional video on how to register to bid on our website, www.northernlivestockvideo.com if you have any questions.

For technical assistance with Internet Viewing and Bidding Questions, call Sam Fraser 406-860-0590.

Phone Bidding:

Anyone wanting to use the Northern Livestock phone bank to bid must pre-register and have a bid number to bid on the phone.

To register with NLVA call 866-616-5035 Before Sale Day.

View the Online CATALOG and VIDEO CLIP of each BULL selling at www.northernlivestockvideo.com.

Bidders who are successful in making purchases will be contacted following the sale to make payment and delivery arrangements.

Northern Livestock's Sale Day Bid Line: **1-406-245-0889.**

Stockmans Insurance Agency LLC

Livestock Insurer



406.671.5100 bill@billpelton.com www.BILLPELTON.com  

Licensed
Since 1989

Coverage
Mortality, Loss of Use

For more information and rates, contact Bill Pelton

"We partner with you to provide the protection you want and need."

Up & Coming Shipwheel Herd Sires



SHIPWHEEL CONFEDERATE 1507

SHIPWHEEL CONFEDERATE 1507 Reg: *20326233

HF Syndicate 213Z
 U-2 Coalition 206C #
 U2 Erelite 109Z
 LD Capitalist 316 #
Shipwheel Pinetop 932
 Shipwheel Pinetop 651 #

Connealy Consensus 7229 #
 HF Miss Blackcap 27R
 Young Dale Xclusive 25X
 U-2 Erelite 1X
 Connealy Capitalist 028 #
 LD Dixie Erica 2053
 S A V Resource 1441 #
 Shipwheel PInetop 365

CED	6
BW	1.2
WW	73
YW	128
MILK	33
SC	.80
MB	.60
RE	.77
FAT	.005
Claw	.40
Angle	.43

*Top selling bull in 2022.
 Owned with Stepler Ranch, MT and Whistling Winds Angus, MT.
 Leased to Breeder Link.
 Semen Available.*



SHIPWHEEL RAINMAKER 0538

SHIPWHEEL RAINMAKER 0538 Reg: *20003132

Basin Rainmaker 2704
Basin Rainmaker 4404
 Basin Joy 1036
 BPF DR J 2110
Shipwheel Pinetop 887
 Shipwheel Pinetop 515

Basin Rainmaker P175 #
 Basin Erica 7520 BV #
 Basin Payweight 107S #
 Basin Joy 566T
 Shipwheel Dr J In Focus 9560
 BPF Forever Lady 651
 S A V Resource 1441 #
 Dr J Ms Wide Track 374 M15

CED	-1
BW	5.2
WW	72
YW	131
MILK	27
SC	1.84
MB	.97
RE	.59
FAT	.044
Claw	.44
Angle	.49

*Owned with Apex Angus Ranch, MT.
 Semen Available.*



SHIPWHEEL BLS BRAVO 1536

SHIPWHEEL BLS BRAVO 1536 Reg: *20364988

Coleman Charlo 0256 #
Coleman Bravo 6313
 Coleman Donna 714
 Shipwheel Ideal 4223 7571
Shipwheel BLS Rachel 966
 Shipwheel BLS Rachel 725

O C C Paxton 730P #
 Bohi Abigale 6014
 Connealy Onward #
 Coleman Donna 386
 Ideal 4223 of 1168 Blkbrd
 Shipwheel Lady 569
 S A V Resource 1441
 Apexette Rachel 2011

CED	18
BW	-1.6
WW	64
YW	116
MILK	21
SC	1.66
MB	.41
RE	.49
FAT	.026
Claw	.29
Angle	.41

*Owned with Scott Knutson, MT.
 Semen Available.*

THE HD50K™ FOR ANGUS



HD50K™ FOR ANGUS IS A GENOTYPING TECHNOLOGY FROM ZOETIS DESIGNED FOR ANGUS SEEDSTOCK PRODUCERS AND FULLY ENDORSED BY THE AMERICAN ANGUS ASSOCIATION AND ANGUS GENETICS, INC.

HD50K™ for Angus replaces i50K™ and the previous version of HD 50K™, and represents an advancement in Angus genotyping technology.

ZOETIS PROVIDES COMPREHENSIVE GENETIC AND MANAGEMENT SOLUTIONS FOR BEEF PRODUCERS:

- 17 staff Ph.D. geneticists driving cutting edge research and development as well as field and customer support across the livestock business
- First to market with novel wellness traits in dairy cows and calves
- Development of innovative decision support tools
- Unmatched technical support and customer service

SELECT, MATE AND MARKET ANGUS SEEDSTOCK WITH CONFIDENCE:

- Commercial bull buyers increasingly request GE-EPDs
- HD50K™ for Angus tested bull batteries enable Sire Match for GeneMax® Advantage™ tested heifers
- Reduce selection and breeding mistakes—with HD50K™ for Angus



HD50K™ for Angus is available to American Angus Association members through Angus Genetics, Inc. and may be purchased online through the AAA Login site.

HD50K™ for Angus: The people, the products, and services you have always relied on.

All trademarks are the property of Zoetis Services LLC or a related company or a licensor unless otherwise noted. GeneMax is a registered trademark of Angus Genetics, Inc. ©2019 Zoetis Services LLC. All rights reserved. 50K-00024

SALE DATE:
Sat, Dec 16th, 2023

Heart of the Hi-Line

~ Commercial Female Sale ~



First Annual Bred Stock & Replacement Heifer Sale

The Hi-Line is home to some of the most productive cattle in the nation due to bloodlines full of maternal instinct and most important, pounds that pay.



~ Featuring Genetics From ~

- Shipwheel Cattle Company
Klint and Lori Swanson, Chinook, MT
- Whistling Winds Angus
Dave and Katie Sattoriva, Hingham, MT
- Peterson Grain and Cattle
Kim and Nora Peterson, Havre, MT
Casey and Chancin Solomon
Andee Peterson

Sale Location:

The Hanson Ranch
Box Elder, MT



CJ Hanson

Cell: (406) 399-1004

Home: (406) 352-3198

"At this point, I'm very comfortable recommending the SweetPro and Redmond salt combination. It sure has done the job for us."

Klint Swanson | Shipwheel Cattle Company | Chinook, MT

MAXIMIZE GENETIC POTENTIAL

**Agri Best
Feeds**

**EQUIPRIDE®
EQUILIX®**

NO
MOLASSES

NO
MOLASSES
OR UREA

FLAX
& MOS
STANDARD

SweetPro



60+
MINERALS

NATURE'S
BALANCE

GARLIC

- Insect Repellent
- Antioxidant



NOW AVAILABLE WITH
**NATURAL
EXTRACTS**

STRESS BLEND

- Gut Health
- Heat Stress



Ranch Delivery & Free Estimates Available.
Call for details.

866.601.6646



ARROWQUIP



866.601.6646

agribestfeeds.com

We're Social!





Shipwheel Cattle Co.
Klint & Lori Swanson
2265 Gooseberry Lane
Chinook, Montana 59523

RETURN SERVICE REQUESTED

